

IRS1 Antibody

Catalog No: #35792

Orders: order@signalwayantibody.comSupport: tech@signalwayantibody.com

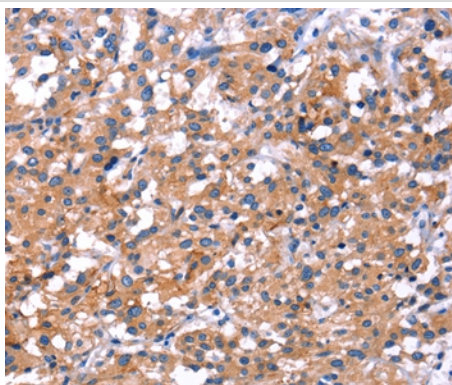
Description

| | |
|-----------------------|--|
| Product Name | IRS1 Antibody |
| Host Species | Rabbit |
| Clonality | Polyclonal |
| Purification | Antigen affinity purification. |
| Applications | IHC |
| Species Reactivity | Hu |
| Specificity | The antibody detects endogenous levels of total IRS1 protein. |
| Immunogen Type | Recombinant Protein |
| Immunogen Description | Fusion protein corresponding to residues near the N terminal of human insulin receptor substrate 1 |
| Target Name | IRS1 |
| Other Names | HIRS-1 |
| Accession No. | Swiss-Prot#: P35568NCBI Gene ID: 3667Gene Accssion: BC053895 |
| Uniprot | P35568 |
| GeneID | 3667; |
| Concentration | 1.4mg/ml |
| Formulation | Rabbit IgG in pH7.4 PBS, 0.05% NaN ₃ , 40% Glycerol. |
| Storage | Store at -20°C |

Application Details

Immunohistochemistry: 1:25-1:100

Images



Immunohistochemical analysis of paraffin-embedded Human thyroid cancer tissue using #35792 at dilution 1/30.

Background

This gene encodes a protein which is phosphorylated by insulin receptor tyrosine kinase. Mutations in this gene are associated with type II diabetes and susceptibility to insulin resistance.

Note: This product is for in vitro research use only