

CD207 Antibody

Catalog No: #35798

Orders: order@signalwayantibody.comSupport: tech@signalwayantibody.com

Description

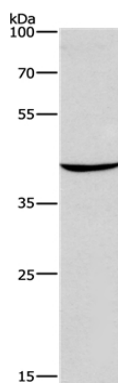
Product Name	CD207 Antibody
Host Species	Rabbit
Clonality	Polyclonal
Purification	Antigen affinity purification.
Applications	WB IHC
Species Reactivity	Hu Ms
Specificity	The antibody detects endogenous levels of total CD207 protein.
Immunogen Type	Recombinant Protein
Immunogen Description	Fusion protein corresponding to a region derived from internal residues of human CD207 molecule, langerin
Target Name	CD207
Other Names	CLEC4K
Accession No.	Swiss-Prot#: Q9UJ71NCBI Gene ID: 50489Gene Accssion: BC022278
Uniprot	Q9UJ71
GeneID	50489;
SDS-PAGE MW	37kd
Concentration	1.7mg/ml
Formulation	Rabbit IgG in pH7.4 PBS, 0.05% NaN ₃ , 40% Glycerol.
Storage	Store at -20°C

Application Details

Western blotting: 1:200-1:1000

Immunohistochemistry: 1:50-1:200

Images



Gel: 8%SDS-PAGE

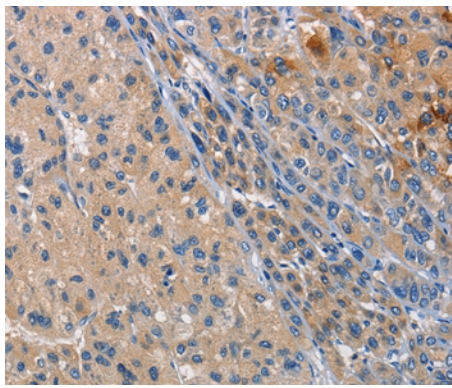
Lysates (from left to right): Mouse skin tissue

Amount of lysate: 40ug per lane

Primary antibody: 1/425 dilution

Secondary antibody dilution: 1/8000

Exposure time: 30 seconds



Immunohistochemical analysis of paraffin-embedded Human liver cancer tissue using #35798 at dilution 1/40.

Background

The protein encoded by this gene is expressed only in Langerhans cells which are immature dendritic cells of the epidermis and mucosa. It is localized in the Birbeck granules, organelles present in the cytoplasm of Langerhans cells and consisting of superimposed and zippered membranes. It is a C-type lectin with mannose binding specificity, and it has been proposed that mannose binding by this protein leads to internalization of antigen into Birbeck granules and providing access to a nonclassical antigen-processing pathway. Mutations in this gene result in Birbeck granules deficiency or loss of sugar binding activity.

Note: This product is for in vitro research use only