

LAIR1 Antibody

Catalog No: #35800



Orders: order@signalwayantibody.com
Support: tech@signalwayantibody.com

Description

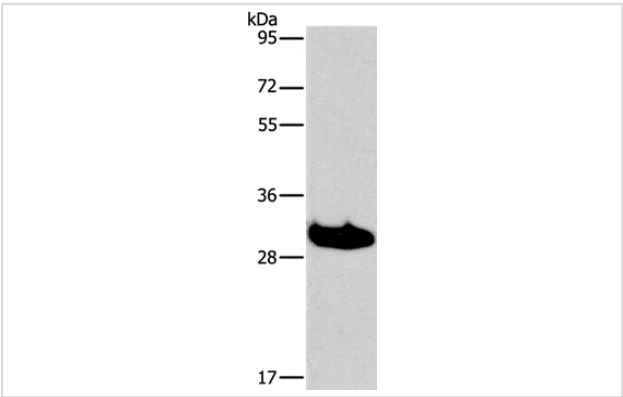
Product Name	LAIR1 Antibody
Host Species	Rabbit
Clonality	Polyclonal
Purification	Antigen affinity purification.
Applications	WB IHC
Species Reactivity	Hu Ms
Specificity	The antibody detects endogenous levels of total LAIR1 protein.
Immunogen Type	Recombinant Protein
Immunogen Description	Fusion protein corresponding to a region derived from internal residues of human leukocyte-associated immunoglobulin-like receptor 1
Target Name	LAIR1
Other Names	CD305; LAIR-1
Accession No.	Swiss-Prot#: Q6GTX8NCBI Gene ID: 3903Gene Accssion: BC027899
Uniprot	Q6GTX8
GeneID	3903;
SDS-PAGE MW	31kd
Concentration	1.1mg/ml
Formulation	Rabbit IgG in pH7.4 PBS, 0.05% NaN3, 40% Glycerol.
Storage	Store at -20°C

Application Details

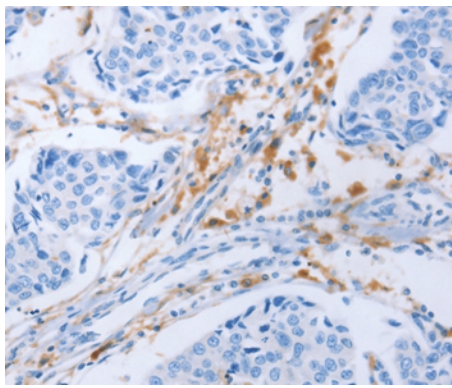
Western blotting: 1:500-1:2000

Immunohistochemistry: 1:15-1:50

Images



Gel: 15%SDS-PAGE
Lysates (from left to right): Mouse liver tissue
Amount of lysate: 40ug per lane
Primary antibody: 1/550 dilution
Secondary antibody dilution: 1/8000
Exposure time: 30 seconds



Immunohistochemical analysis of paraffin-embedded Human lung cancer tissue using #35800 at dilution 1/25.

Background

The protein encoded by this gene is an inhibitory receptor found on peripheral mononuclear cells, including NK cells, T cells, and B cells. Inhibitory receptors regulate the immune response to prevent lysis of cells recognized as self. The gene is a member of both the immunoglobulin superfamily and the leukocyte-associated inhibitory receptor family. The gene maps to a region of 19q13.4 called the leukocyte receptor cluster, which contains at least 29 genes encoding leukocyte-expressed receptors of the immunoglobulin superfamily.?

Note: This product is for in vitro research use only