

LEF1 Antibody

Catalog No: #35801

Orders: order@signalwayantibody.comSupport: tech@signalwayantibody.com

Description

Product Name	LEF1 Antibody
Host Species	Rabbit
Clonality	Polyclonal
Purification	Antigen affinity purification.
Applications	IHC
Species Reactivity	Hu
Specificity	The antibody detects endogenous levels of total LEF1 protein.
Immunogen Type	Recombinant Protein
Immunogen Description	Fusion protein corresponding to residues near the C terminal of human lymphoid enhancer-binding factor 1
Target Name	LEF1
Other Names	LEF-1; TCF10; TCF7L3; TCF1ALPHA
Accession No.	Swiss-Prot#: Q9UJU2NCBI Gene ID: 51176Gene Accssion: BC050632
Uniprot	Q9UJU2
GeneID	51176;
Concentration	0.8mg/ml
Formulation	Rabbit IgG in pH7.4 PBS, 0.05% NaN ₃ , 40% Glycerol.
Storage	Store at -20°C

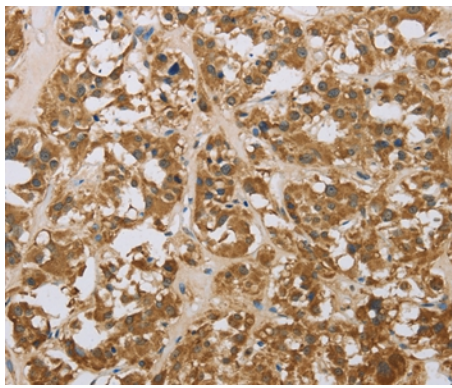
Application Details

Immunohistochemistry: 1:25-1:100

Images



Immunohistochemical analysis of paraffin-embedded Human thyroid cancer tissue using #35801 at dilution 1/20.



Immunohistochemical analysis of paraffin-embedded Human tonsil tissue using #35801 at dilution 1/20.

Background

This gene encodes a transcription factor belonging to a family of proteins that share homology with the high mobility group protein-1. The protein encoded by this gene can bind to a functionally important site in the T-cell receptor-alpha enhancer, thereby conferring maximal enhancer activity. This transcription factor is involved in the Wnt signaling pathway, and it may function in hair cell differentiation and follicle morphogenesis. Mutations in this gene have been found in somatic sebaceous tumors. This gene has also been linked to other cancers, including androgen-independent prostate cancer. Alternative splicing results in multiple transcript variants.

Note: This product is for in vitro research use only