

LXN Antibody

Catalog No: #35804



Orders: order@signalwayantibody.com
Support: tech@signalwayantibody.com

Description

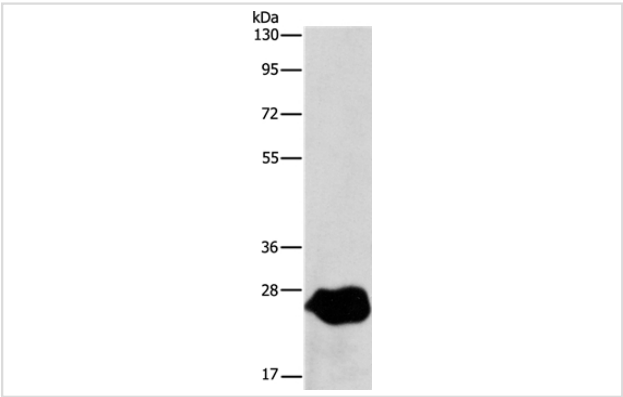
Product Name	LXN Antibody
Host Species	Rabbit
Clonality	Polyclonal
Purification	Antigen affinity purification.
Applications	WB IHC
Species Reactivity	Hu
Specificity	The antibody detects endogenous levels of total LXN protein.
Immunogen Type	Recombinant Protein
Immunogen Description	Full length fusion protein
Target Name	LXN
Other Names	ECI; TCI
Accession No.	Swiss-Prot#: Q9BS40NCBI Gene ID: 56925Gene Accssion: BC005346
Uniprot	Q9BS40
GeneID	56925;
SDS-PAGE MW	26kd
Concentration	1mg/ml
Formulation	Rabbit IgG in pH7.4 PBS, 0.05% NaN3, 40% Glycerol.
Storage	Store at -20°C

Application Details

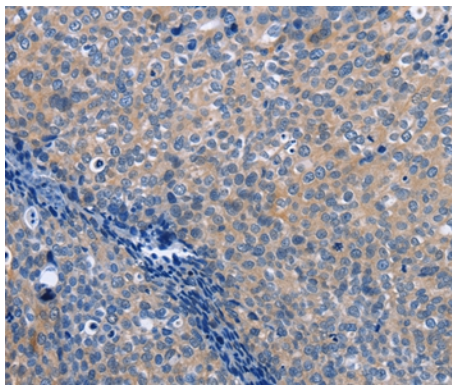
Western blotting: 1:1000-1:5000

Immunohistochemistry: 1:25-1:100

Images



Gel: 10%SDS-PAGE
Lysate: 40ug A549 cell
Primary antibody: 1/667 dilution
Secondary antibody dilution: 1/8000
Exposure time: 10 seconds



Immunohistochemical analysis of paraffin-embedded Human cervical cancer tissue using #35804 at dilution 1/25.

Background

Latexin, also designated endogenous carboxypeptidase inhibitor (ECI) or tissue carboxypeptidase inhibitor (TCI), belongs to the protease inhibitor I47 family of proteins. Latexin acts as a non-competitive, reversible inhibitor for metallocarboxypeptidases (MCPs), including CPA1, CPA2 and CPA4. It is a cytoplasmic protein that is highly expressed in heart, prostate, pancreas, ovary, kidney, brain and colon. Latexin consists of two topologically equivalent subdomains that bind to MCPs with low specificity, which gives it with the flexibility to inhibit all vertebrate A/B MCPs.

Note: This product is for in vitro research use only