

## ST14 Antibody

Catalog No: #35811

Orders: [order@signalwayantibody.com](mailto:order@signalwayantibody.com)Support: [tech@signalwayantibody.com](mailto:tech@signalwayantibody.com)

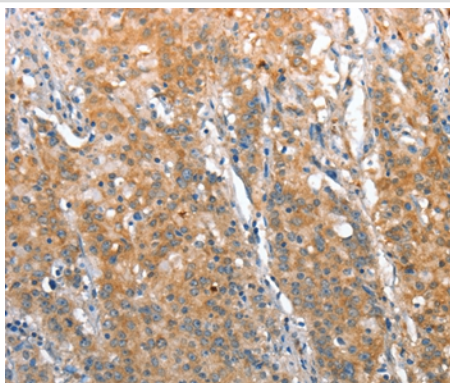
## Description

Product Name	ST14 Antibody
Host Species	Rabbit
Clonality	Polyclonal
Purification	Antigen affinity purification.
Applications	IHC
Species Reactivity	Hu
Specificity	The antibody detects endogenous levels of total ST14 protein.
Immunogen Type	Recombinant Protein
Immunogen Description	Fusion protein corresponding to a region derived from internal residues of human suppression of tumorigenicity 14 (colon carcinoma)
Target Name	ST14
Other Names	HAI; MTSP1; SNC19; MT-SP1; PRSS14; TADG15; TMPRSS14
Accession No.	Swiss-Prot#: Q9Y5Y6NCBI Gene ID: 6768Gene Accssion: BC030532
Uniprot	Q9Y5Y6
GeneID	6768;
Concentration	3.1mg/ml
Formulation	Rabbit IgG in pH7.4 PBS, 0.05% NaN <sub>3</sub> , 40% Glycerol.
Storage	Store at -20°C

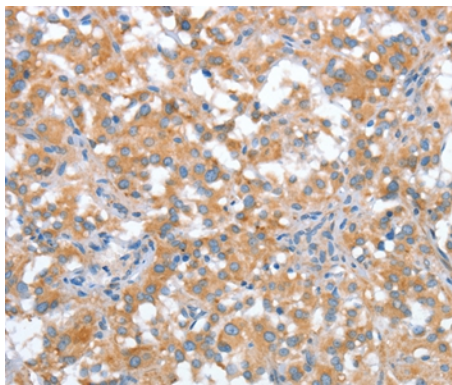
## Application Details

Immunohistochemistry: 1:50-1:200

## Images



Immunohistochemical analysis of paraffin-embedded Human gastric cancer tissue using #35811 at dilution 1/70.



Immunohistochemical analysis of paraffin-embedded Human thyroid cancer tissue using #35811 at dilution 1/70.

## Background

The protein encoded by this gene is an epithelial-derived, integral membrane serine protease. This protease forms a complex with the Kunitz-type serine protease inhibitor, HAI-1, and is found to be activated by sphingosine 1-phosphate. This protease has been shown to cleave and activate hepatocyte growth factor/scattering factor, and urokinase plasminogen activator, which suggest the function of this protease as an epithelial membrane activator for other proteases and latent growth factors.

Note: This product is for in vitro research use only