

MCM8 Antibody

Catalog No: #35812

Orders: order@signalwayantibody.comSupport: tech@signalwayantibody.com

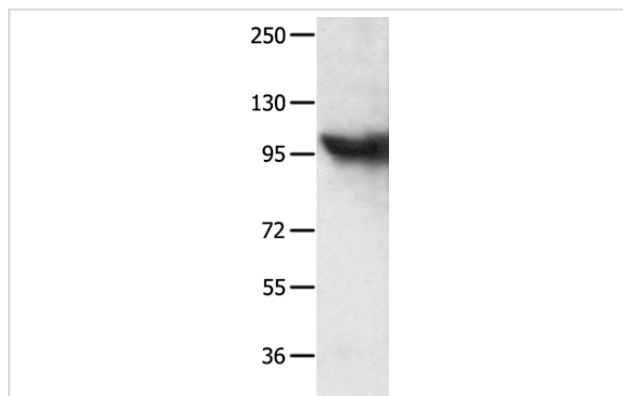
Description

Product Name	MCM8 Antibody
Host Species	Rabbit
Clonality	Polyclonal
Purification	Antigen affinity purification.
Applications	WB
Species Reactivity	Hu
Specificity	The antibody detects endogenous levels of total MCM8 protein.
Immunogen Type	Recombinant Protein
Immunogen Description	Fusion protein corresponding to residues near the C terminal of human minichromosome maintenance complex component 8
Target Name	MCM8
Other Names	REC; C20orf154; dJ967N21.5
Accession No.	Swiss-Prot#: Q9UJA3NCBI Gene ID: 84515Gene Accssion: BC080656
Uniprot	Q9UJA3
GeneID	84515;
SDS-PAGE MW	94kd
Concentration	1mg/ml
Formulation	Rabbit IgG in pH7.4 PBS, 0.05% NaN ₃ , 40% Glycerol.
Storage	Store at -20°C

Application Details

Western blotting: 1:200-1:1000

Images



Gel: 10%SDS-PAGE
Lysate: 40ug Jurkat cell
Primary antibody: 1/300 dilution
Secondary antibody dilution: 1/8000
Exposure time: 1 minute

Background

The protein encoded by this gene is one of the highly conserved mini-chromosome maintenance proteins (MCM) that are essential for the initiation of

eukaryotic genome replication. The hexameric protein complex formed by the MCM proteins is a key component of the pre-replication complex (pre_RC) and may be involved in the formation of replication forks and in the recruitment of other DNA replication related proteins. This protein contains the central domain that is conserved among the MCM proteins. This protein has been shown to co-immunoprecipitate with MCM4, 6 and 7, which suggests that it may interact with other MCM proteins and play a role in DNA replication. Alternatively spliced transcript variants encoding distinct isoforms have been described.

Note: This product is for in vitro research use only