

MYH1 Antibody

Catalog No: #35828

Orders: order@signalwayantibody.comSupport: tech@signalwayantibody.com

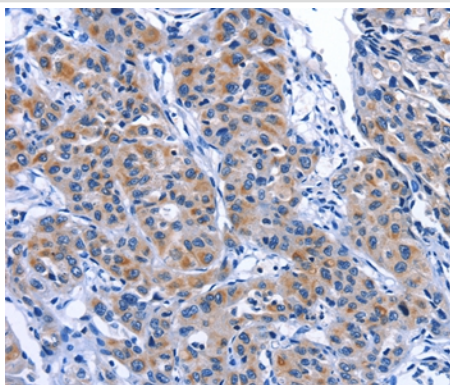
Description

Product Name	MYH1 Antibody
Host Species	Rabbit
Clonality	Polyclonal
Purification	Antigen affinity purification.
Applications	IHC
Species Reactivity	Hu
Specificity	The antibody detects endogenous levels of total MYH1 protein.
Immunogen Type	Recombinant Protein
Immunogen Description	Fusion protein corresponding to residues near the C terminal of human myosin, heavy chain 1, skeletal muscle, adult
Target Name	MYH1
Other Names	MYHa; MYHSA1; MyHC-2x; MyHC-2X/D
Accession No.	Swiss-Prot#: P12882NCBI Gene ID: 4619Gene Accssion: BC114545
Uniprot	P12882
GeneID	4619;
Concentration	1.3mg/ml
Formulation	Rabbit IgG in pH7.4 PBS, 0.05% NaN ₃ , 40% Glycerol.
Storage	Store at -20°C

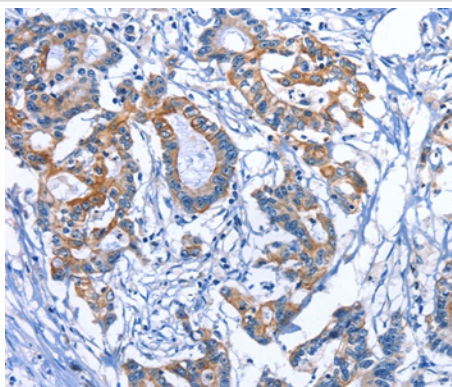
Application Details

Immunohistochemistry: 1:25-1:100

Images



Immunohistochemical analysis of paraffin-embedded Human lung cancer tissue using #35828 at dilution 1/30.



Immunohistochemical analysis of paraffin-embedded Human colon cancer tissue using #35828 at dilution 1/30.

Background

Myosin is a major contractile protein which converts chemical energy into mechanical energy through the hydrolysis of ATP. Myosin is a hexameric protein composed of a pair of myosin heavy chains (MYH) and two pairs of nonidentical light chains. Myosin heavy chains are encoded by a multigene family. In mammals at least 10 different myosin heavy chain (MYH) isoforms have been described from striated, smooth, and nonmuscle cells. These isoforms show expression that is spatially and temporally regulated during development.

Note: This product is for in vitro research use only