

KLRC1 Antibody

Catalog No: #35839

Orders: order@signalwayantibody.comSupport: tech@signalwayantibody.com

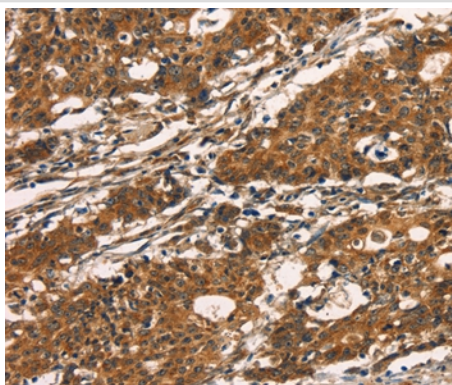
Description

Product Name	KLRC1 Antibody
Host Species	Rabbit
Clonality	Polyclonal
Purification	Antigen affinity purification.
Applications	IHC
Species Reactivity	Hu
Specificity	The antibody detects endogenous levels of total KLRC1 protein.
Immunogen Type	Recombinant Protein
Immunogen Description	Fusion protein corresponding to a region derived from internal residues of human killer cell lectin-like receptor subfamily C, member 1
Target Name	KLRC1
Other Names	NKG2; NKG2A; CD159A
Accession No.	Swiss-Prot#: P26715NCBI Gene ID: 3821Gene Accssion: BC053840
Uniprot	P26715
GeneID	3821;
Concentration	1.2mg/ml
Formulation	Rabbit IgG in pH7.4 PBS, 0.05% NaN ₃ , 40% Glycerol.
Storage	Store at -20°C

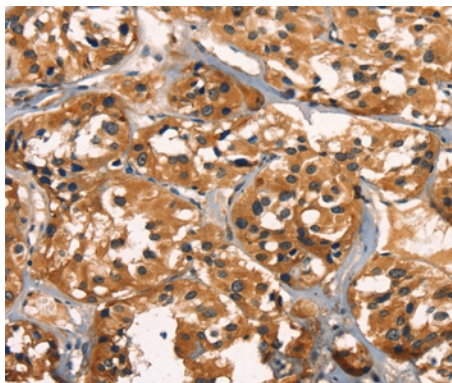
Application Details

Immunohistochemistry: 1:50-1:200

Images



Immunohistochemical analysis of paraffin-embedded Human gastric cancer tissue using #35839 at dilution 1/20.



Immunohistochemical analysis of paraffin-embedded Human thyroid cancer tissue using #35839 at dilution 1/20.

Background

Natural killer (NK) cells are lymphocytes that can mediate lysis of certain tumor cells and virus-infected cells without previous activation. They can also regulate specific humoral and cell-mediated immunity. The protein encoded by this gene belongs to the killer cell lectin-like receptor family, also called NKG2 family, which is a group of transmembrane proteins preferentially expressed in NK cells. This family of proteins is characterized by the type II membrane orientation and the presence of a C-type lectin domain. This protein forms a complex with another family member, KLRD1/CD94, and has been implicated in the recognition of the MHC class I HLA-E molecules in NK cells.

Note: This product is for in vitro research use only