

## RB1 Antibody

Catalog No: #35851

Orders: [order@signalwayantibody.com](mailto:order@signalwayantibody.com)Support: [tech@signalwayantibody.com](mailto:tech@signalwayantibody.com)

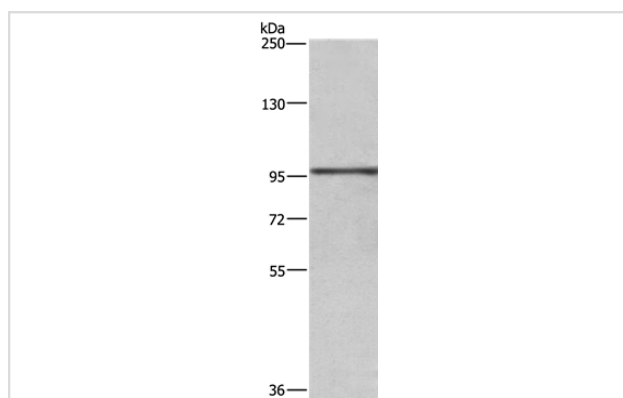
## Description

Product Name	RB1 Antibody
Host Species	Rabbit
Clonality	Polyclonal
Purification	Antigen affinity purification.
Applications	WB
Species Reactivity	Hu
Specificity	The antibody detects endogenous levels of total RB1 protein.
Immunogen Type	Recombinant Protein
Immunogen Description	Fusion protein corresponding to residues near the C terminal of human retinoblastoma 1
Target Name	RB1
Other Names	RB; pRb; OSRC; pp110; p105-Rb
Accession No.	Swiss-Prot#: P06400NCBI Gene ID: 5925Gene Accssion: BC039060
Uniprot	P06400
GeneID	5925;
SDS-PAGE MW	106kd
Concentration	2.1mg/ml
Formulation	Rabbit IgG in pH7.4 PBS, 0.05% NaN <sub>3</sub> , 40% Glycerol.
Storage	Store at -20°C

## Application Details

Western blotting: 1:200-1:1000

## Images



Gel: 6%SDS-PAGE  
Lysate: 40ug A431 cell  
Primary antibody: 1/500 dilution  
Secondary antibody dilution: 1/8000  
Exposure time: 5 seconds

## Background

The protein encoded by this gene is a negative regulator of the cell cycle and was the first tumor suppressor gene found. The encoded protein also stabilizes constitutive heterochromatin to maintain the overall chromatin structure. The active, hypophosphorylated form of the protein binds

transcription factor E2F1. Defects in this gene are a cause of childhood cancer retinoblastoma (RB), bladder cancer, and osteogenic sarcoma

---

Note: This product is for in vitro research use only