

OPCML Antibody

Catalog No: #35854

Orders: order@signalwayantibody.comSupport: tech@signalwayantibody.com

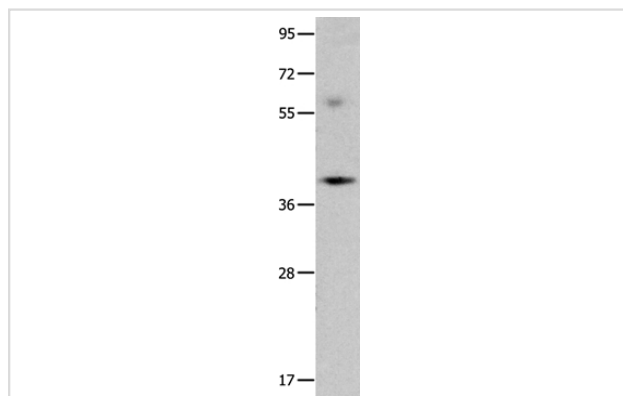
Description

Product Name	OPCML Antibody
Host Species	Rabbit
Clonality	Polyclonal
Purification	Antigen affinity purification.
Applications	WB
Species Reactivity	Hu Ms
Specificity	The antibody detects endogenous levels of total OPCML protein.
Immunogen Type	Recombinant Protein
Immunogen Description	Fusion protein corresponding to a region derived from internal residues of human opioid binding protein/cell adhesion molecule-like
Target Name	OPCML
Other Names	OPCM; OBCAM; IGLON1
Accession No.	Swiss-Prot#: Q14982NCBI Gene ID: 4978Gene Accssion: BC117254
Uniprot	Q14982
GeneID	4978;
SDS-PAGE MW	38kd
Concentration	0.8mg/ml
Formulation	Rabbit IgG in pH7.4 PBS, 0.05% NaN ₃ , 40% Glycerol.
Storage	Store at -20°C

Application Details

Western blotting: 1:500-1:2000

Images



Gel: 10%SDS-PAGE
Lysates (from left to right): Mouse brain tissue
Amount of lysate: 40ug per lane
Primary antibody: 1/400 dilution
Secondary antibody dilution: 1/8000
Exposure time: 1 minute

Background

This gene encodes a member of the IgLON subfamily in the immunoglobulin protein superfamily. The encoded protein is localized in the plasma

membrane and may have an accessory role in opioid receptor function. This gene has an ortholog in rat and bovine. The opioid binding-cell adhesion molecule encoded by the rat gene binds opioid alkaloids in the presence of acidic lipids, exhibits selectivity for mu ligands and acts as a GPI-anchored protein. Since the encoded protein is highly conserved in species during evolution, it may have a fundamental role in mammalian systems. Two transcript variants encoding different isoforms have been found for this gene.

Note: This product is for in vitro research use only