

## SERPINE2 Antibody

Catalog No: #35862

Orders: [order@signalwayantibody.com](mailto:order@signalwayantibody.com)Support: [tech@signalwayantibody.com](mailto:tech@signalwayantibody.com)

## Description

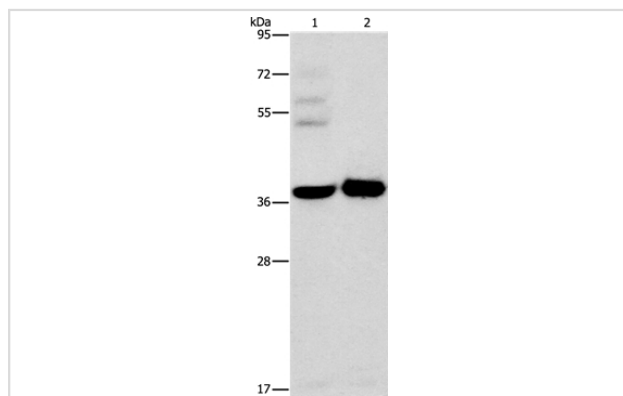
|                       |  |
|-----------------------|--|
| Product Name          | SERPINE2 Antibody  |
| Host Species          | Rabbit   |
| Clonality             | Polyclonal   |
| Purification          | Antigen affinity purification.   |
| Applications          | WB IHC   |
| Species Reactivity    | Hu   |
| Specificity           | The antibody detects endogenous levels of total SERPINE2 protein.  |
| Immunogen Type        | Recombinant Protein  |
| Immunogen Description | Fusion protein corresponding to a region derived from internal residues of human serpin peptidase inhibitor, clade E (nexin, plasminogen activator inhibitor type 1), member 2 |
| Target Name           | SERPINE2   |
| Other Names           | GDN; PI7; PN1; PNI; PI-7; PN-1; GDNPF  |
| Accession No.         | Swiss-Prot#: P07093NCBI Gene ID: 5270Gene Accssion: BC042628   |
| Uniprot               | P07093   |
| GeneID                | 5270;  |
| SDS-PAGE MW           | 44kd   |
| Concentration         | 0.9mg/ml   |
| Formulation           | Rabbit IgG in pH7.4 PBS, 0.05% NaN <sub>3</sub> , 40% Glycerol.  |
| Storage               | Store at -20°C   |

## Application Details

Western blotting: 1:500-1:2000

Immunohistochemistry: 1:25-1:100

## Images



Gel: 8%SDS-PAGE

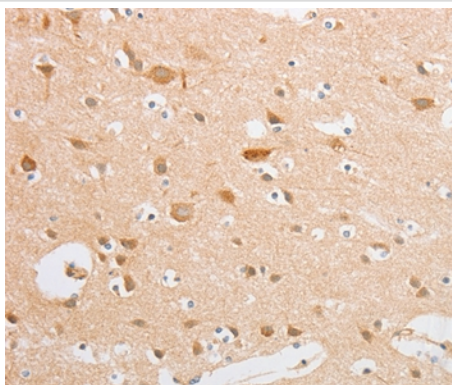
Lysates (from left to right): A172 cell and human fetal brain tissue

Amount of lysate: 40ug per lane

Primary antibody: 1/450 dilution

Secondary antibody dilution: 1/8000

Exposure time: 15 seconds



Immunohistochemical analysis of paraffin-embedded Human lung cancer tissue using #35862 at dilution 1/20.

## Background

This gene encodes a member of the serpin family of proteins, a group of proteins that inhibit serine proteases. Thrombin, urokinase, plasmin and trypsin are among the proteases that this family member can inhibit. This gene is a susceptibility gene for chronic obstructive pulmonary disease and for emphysema. Alternative splicing results in multiple transcript variants.

Note: This product is for in vitro research use only