

PARD6A Antibody

Catalog No: #35868

Orders: order@signalwayantibody.comSupport: tech@signalwayantibody.com

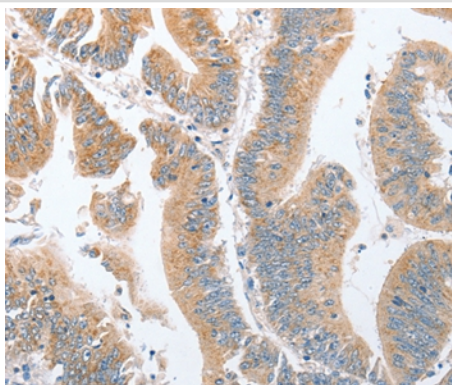
Description

Product Name	PARD6A Antibody
Host Species	Rabbit
Clonality	Polyclonal
Purification	Antigen affinity purification.
Applications	IHC
Species Reactivity	Hu
Specificity	The antibody detects endogenous levels of total PARD6A protein.
Immunogen Type	Recombinant Protein
Immunogen Description	Fusion protein corresponding to residues near the C terminal of human par-6 family cell polarity regulator alpha
Target Name	PARD6A
Other Names	PAR6; PAR6C; TAX40; PAR-6A; TIP-40; PAR6alpha
Accession No.	Swiss-Prot#: Q9NPB6NCBI Gene ID: 50855Gene Accssion: BC015626
Uniprot	Q9NPB6
GeneID	50855;
Concentration	3mg/ml
Formulation	Rabbit IgG in pH7.4 PBS, 0.05% NaN ₃ , 40% Glycerol.
Storage	Store at -20°C

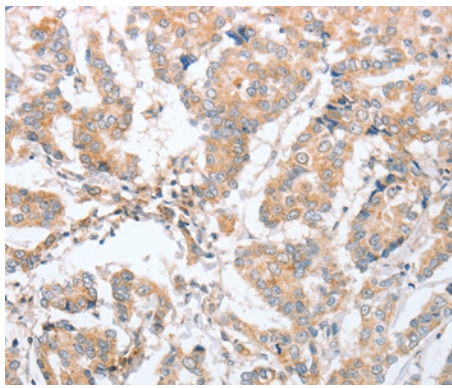
Application Details

Immunohistochemistry: 1:50-1:200

Images



Immunohistochemical analysis of paraffin-embedded Human colon cancer tissue using #35868 at dilution 1/60.



Immunohistochemical analysis of paraffin-embedded Human breast cancer tissue using #35868 at dilution 1/60.

Background

This gene is a member of the PAR6 family and encodes a protein with a PSD95/Discs-large/ZO1 (PDZ) domain and a semi-Cdc42/Rac interactive binding (CRIB) domain. This cell membrane protein is involved in asymmetrical cell division and cell polarization processes as a member of a multi-protein complex. The protein also has a role in the epithelial-to-mesenchymal transition (EMT) that characterizes the invasive phenotype associated with metastatic carcinomas. Alternate transcriptional splice variants, encoding different isoforms, have been characterized.

Note: This product is for in vitro research use only