

SERP1 Antibody

Catalog No: #35887

Orders: order@signalwayantibody.comSupport: tech@signalwayantibody.com

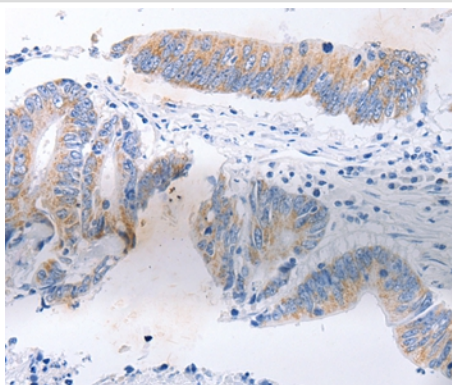
Description

Product Name	SERP1 Antibody
Host Species	Rabbit
Clonality	Polyclonal
Purification	Antigen affinity purification.
Applications	IHC
Species Reactivity	Hu Ms Rt
Specificity	The antibody detects endogenous levels of total SERP1 protein.
Immunogen Type	Recombinant Protein
Immunogen Description	Fusion protein corresponding to residues near the N terminal of human stress-associated endoplasmic reticulum protein 1
Target Name	SERP1
Other Names	RAMP4
Accession No.	Swiss-Prot#: Q9Y6X1NCBI Gene ID: 27230Gene Accssion: BC112364
Uniprot	Q9Y6X1
GeneID	27230;
Concentration	0.8mg/ml
Formulation	Rabbit IgG in pH7.4 PBS, 0.05% NaN ₃ , 40% Glycerol.
Storage	Store at -20°C

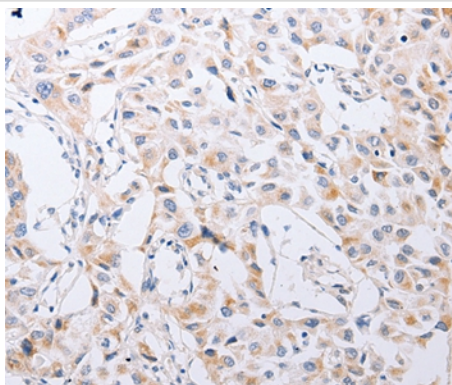
Application Details

Immunohistochemistry: 1:25-1:100

Images



Immunohistochemical analysis of paraffin-embedded Human colon cancer tissue using #35887 at dilution 1/30.



Immunohistochemical analysis of paraffin-embedded Human lung cancer tissue using #35887 at dilution 1/30.

Background

This gene interacts with target proteins during their translocation into the lumen of the endoplasmic reticulum. Protects unfolded target proteins against degradation during ER stress. May facilitate glycosylation of target proteins after termination of ER stress. May modulate the use of N-glycosylation sites on target proteins.

Note: This product is for in vitro research use only