

PSMD8 Antibody

Catalog No: #35895

Orders: order@signalwayantibody.comSupport: tech@signalwayantibody.com

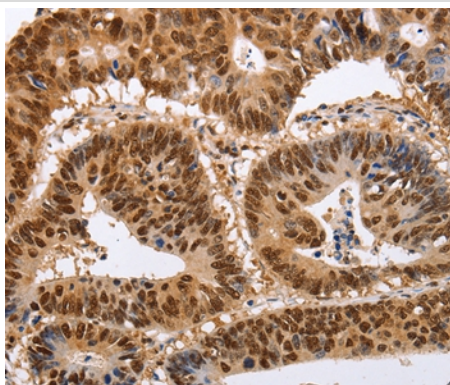
Description

Product Name	PSMD8 Antibody
Host Species	Rabbit
Clonality	Polyclonal
Purification	Antigen affinity purification.
Applications	IHC
Species Reactivity	Hu
Specificity	The antibody detects endogenous levels of total PSMD8 protein.
Immunogen Type	Recombinant Protein
Immunogen Description	Full length fusion protein
Target Name	PSMD8
Other Names	S14; p31; HIP6; HYPF; Nin1p; Rpn12
Accession No.	Swiss-Prot#: P48556NCBI Gene ID: 5714Gene Accssion: BC001164
Uniprot	P48556
GeneID	5714;
Concentration	0.7mg/ml
Formulation	Rabbit IgG in pH7.4 PBS, 0.05% NaN ₃ , 40% Glycerol.
Storage	Store at -20°C

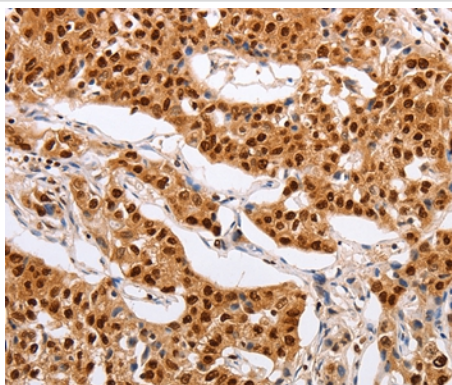
Application Details

Immunohistochemistry: 1:50-1:200

Images



Immunohistochemical analysis of paraffin-embedded Human colon cancer tissue using #35895 at dilution 1/25.



Immunohistochemical analysis of paraffin-embedded Human lung cancer tissue using #35895 at dilution 1/25.

Background

The 26S proteasome is a multicatalytic proteinase complex with a highly ordered structure composed of 2 complexes, a 20S core and a 19S regulator. The 20S core is composed of 4 rings of 28 non-identical subunits; 2 rings are composed of 7 alpha subunits and 2 rings are composed of 7 beta subunits. The 19S regulator is composed of a base, which contains 6 ATPase subunits and 2 non-ATPase subunits, and a lid, which contains up to 10 non-ATPase subunits. Proteasomes are distributed throughout eukaryotic cells at a high concentration and cleave peptides in an ATP/ubiquitin-dependent process in a non-lysosomal pathway. An essential function of a modified proteasome, the immunoproteasome, is the processing of class I MHC peptides. This gene encodes a non-ATPase subunit of the 19S regulator. A pseudogene has been identified on chromosome 1.

Note: This product is for in vitro research use only