

PTPRE Antibody

Catalog No: #35900

Orders: order@signalwayantibody.comSupport: tech@signalwayantibody.com

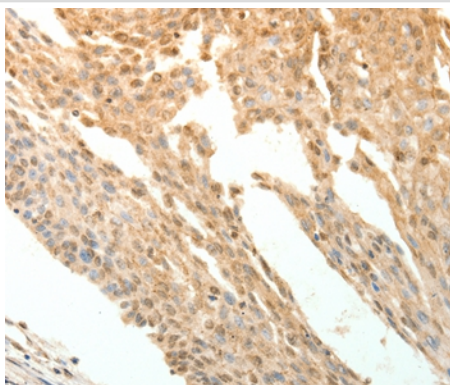
Description

Product Name	PTPRE Antibody
Host Species	Rabbit
Clonality	Polyclonal
Purification	Antigen affinity purification.
Applications	IHC
Species Reactivity	Hu
Specificity	The antibody detects endogenous levels of total PTPRE protein.
Immunogen Type	Recombinant Protein
Immunogen Description	Fusion protein corresponding to a region derived from internal residues of human protein tyrosine phosphatase, receptor type, E
Target Name	PTPRE
Other Names	PTPE; HPTPE; R-PTP-EPSILON
Accession No.	Swiss-Prot#: P23469NCBI Gene ID: 5791Gene Accssion: BC050062
Uniprot	P23469
GeneID	5791;
Concentration	0.4mg/ml
Formulation	Rabbit IgG in pH7.4 PBS, 0.05% NaN ₃ , 40% Glycerol.
Storage	Store at -20°C

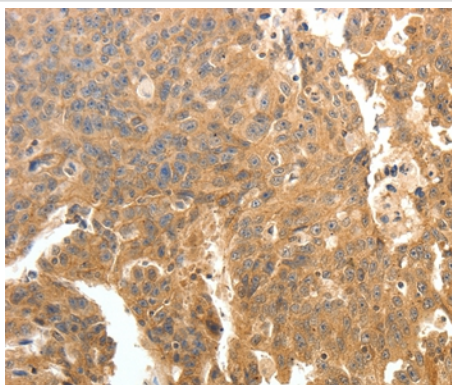
Application Details

Immunohistochemistry: 1:15-1:50

Images



Immunohistochemical analysis of paraffin-embedded Human ovarian cancer tissue using #35900 at dilution 1/10.



Immunohistochemical analysis of paraffin-embedded Human cervical cancer tissue using #35900 at dilution 1/10.

Background

The protein encoded by this gene is a member of the protein tyrosine phosphatase (PTP) family. PTPs are known to be signaling molecules that regulate a variety of cellular processes including cell growth, differentiation, mitotic cycle, and oncogenic transformation. Two alternatively spliced transcript variants of this gene have been reported, one of which encodes a receptor-type PTP that possesses a short extracellular domain, a single transmembrane region, and two tandem intracytoplasmic catalytic domains; Another one encodes a PTP that contains a distinct hydrophilic N-terminus, and thus represents a nonreceptor-type isoform of this PTP. Studies of the similar gene in mice suggested the regulatory roles of this PTP in RAS related signal transduction pathways, cytokines induced SATA signaling, as well as the activation of voltage-gated K⁺ channels.

Note: This product is for in vitro research use only