

COMMD7 antibody

Catalog No: #22067

Orders: order@signalwayantibody.comSupport: tech@signalwayantibody.com

Description

Product Name	COMMD7 antibody
Host Species	Rabbit
Clonality	Polyclonal
Purification	Purified by antigen-affinity chromatography.
Applications	WB IHC
Species Reactivity	Hu
Immunogen Type	Peptide
Immunogen Description	Synthetic peptide contain a sequence corresponding to a region within amino acids 52 and 112 of human COMMD7
Target Name	COMMD7
Accession No.	Swiss-Prot:Q86VX2Gene ID:149951
Uniprot	Q86VX2
GeneID	149951;
Concentration	1mg/ml
Formulation	Supplied in 0.1M Tris-buffered saline with 10% Glycerol (pH7.0). 0.01% Thimerosal was added as a preservative.
Storage	Store at -20°C for long term preservation (recommended). Store at 4°C for short term use.

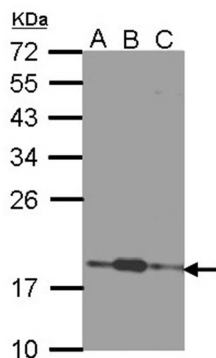
Application Details

Predicted MW: 23kd

Western blotting: 1:500-1:3000

Immunohistochemistry: 1:50-1:500

Images



Sample (30 ug of whole cell lysate)

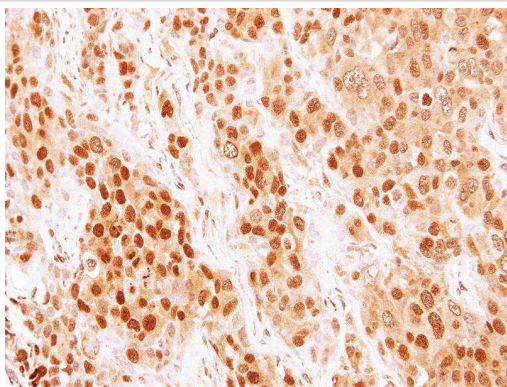
A: 293T

B: A431

C: H1299

12% SDS PAGE

Primary antibody diluted at 1: 1000



Immunohistochemical analysis of paraffin-embedded BT474 xenograft, using COMMD7 antibody at 1: 500 dilution.

Note: This product is for in vitro research use only