

PVALB Antibody

Catalog No: #35902



Orders: [order@signalwayantibody.com](mailto:order@signalwayantibody.com)  
Support: [tech@signalwayantibody.com](mailto:tech@signalwayantibody.com)

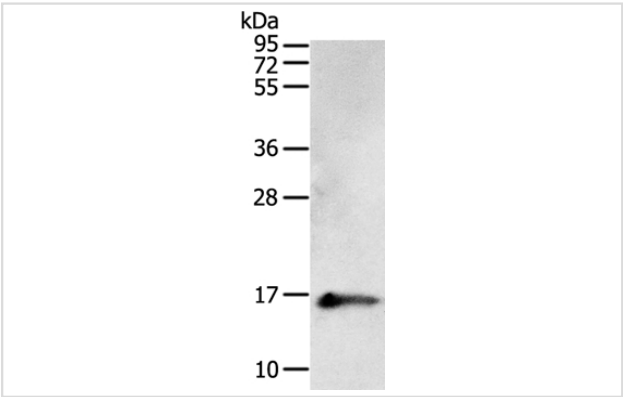
Description

Product Name	PVALB Antibody
Host Species	Rabbit
Clonality	Polyclonal
Purification	Antigen affinity purification.
Applications	WB IHC
Species Reactivity	Hu
Specificity	The antibody detects endogenous levels of total PVALB protein.
Immunogen Type	Recombinant Protein
Immunogen Description	Fusion protein corresponding to residues near the N terminal of human parvalbumin
Target Name	PVALB
Other Names	D22S749
Accession No.	Swiss-Prot#: P20472NCBI Gene ID: 5816Gene Accssion: BC069300
Uniprot	P20472
GeneID	5816;
SDS-PAGE MW	12kd
Concentration	0.9mg/ml
Formulation	Rabbit IgG in pH7.4 PBS, 0.05% NaN3, 40% Glycerol.
Storage	Store at -20°C

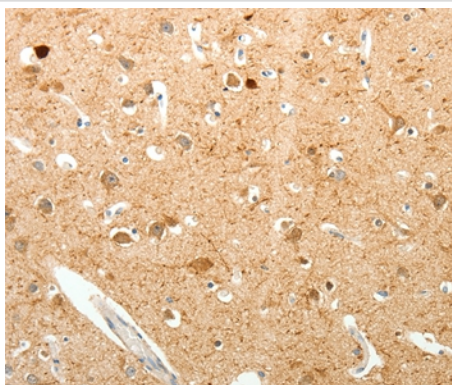
Application Details

Western blotting: 1:200-1:1000
Immunohistochemistry: 1:25-1:100

Images



Gel: 12%SDS-PAGE  
Lysates (from left to right): Human fetal brain tissue  
Amount of lysate: 50ug per lane  
Primary antibody: 1/400 dilution  
Secondary antibody dilution: 1/8000  
Exposure time: 1 minute



Immunohistochemical analysis of paraffin-embedded Human brain tissue using #35902 at dilution 1/20.

## Background

Parvalbumin is a calcium-binding albumin protein with low molecular weight (typically 9-11 kDa). It has three EF hand motifs and is structurally related to calmodulin and troponin C. Parvalbumin is localised in fast-contracting muscles, where its levels are highest, and in the brain and some endocrine tissues. Parvalbumin is a small, stable protein containing EF-hand type calcium binding sites. It is involved in calcium signaling. Typically, this protein is broken into three domains, domains AB, CD and EF, each individually containing a helix-loop-helix motif.

Note: This product is for in vitro research use only