

SCG3 Antibody

Catalog No: #35910

Orders: order@signalwayantibody.comSupport: tech@signalwayantibody.com

Description

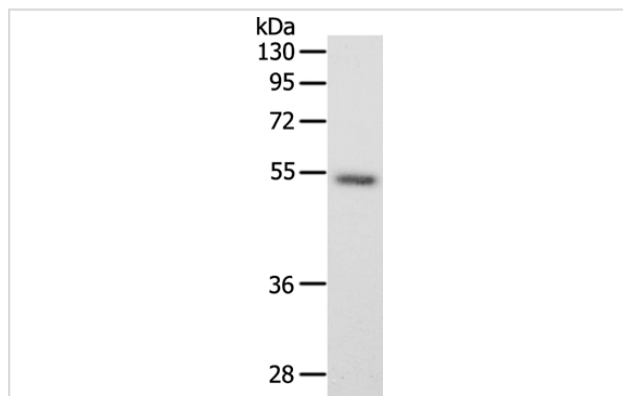
Product Name	SCG3 Antibody
Host Species	Rabbit
Clonality	Polyclonal
Purification	Antigen affinity purification.
Applications	WB IHC
Species Reactivity	Hu Ms
Specificity	The antibody detects endogenous levels of total SCG3 protein.
Immunogen Type	Recombinant Protein
Immunogen Description	Fusion protein corresponding to a region derived from internal residues of human Secretogranin III
Target Name	SCG3
Other Names	SGIII
Accession No.	Swiss-Prot#: Q8WXD2NCBI Gene ID: 29106Gene Accssion: BC014539
Uniprot	Q8WXD2
GeneID	29106;
SDS-PAGE MW	53kd
Concentration	0.7mg/ml
Formulation	Rabbit IgG in pH7.4 PBS, 0.05% NaN ₃ , 40% Glycerol.
Storage	Store at -20°C

Application Details

Western blotting: 1:200-1:1000

Immunohistochemistry: 1:15-1:50

Images



Gel: 10%SDS-PAGE

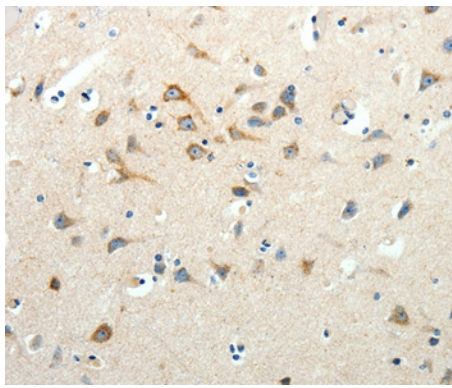
Lysates (from left to right): Mouse intestinum tenue tissue

Amount of lysate: 40ug per lane

Primary antibody: 1/350 dilution

Secondary antibody dilution: 1/8000

Exposure time: 2 minutes



Immunohistochemical analysis of paraffin-embedded Human brain tissue using #35910 at dilution 1/25.

Background

The protein encoded by this gene is a member of the chromogranin/secretogranin family of neuroendocrine secretory proteins. Granins may serve as precursors for biologically active peptides. Some granins have been shown to function as helper proteins in sorting and proteolytic processing of prohormones; however, the function of this protein is unknown. Two transcript variants encoding different isoforms have been found for this gene.

Note: This product is for in vitro research use only