

SLC12A4 Antibody

Catalog No: #35916

Orders: order@signalwayantibody.comSupport: tech@signalwayantibody.com

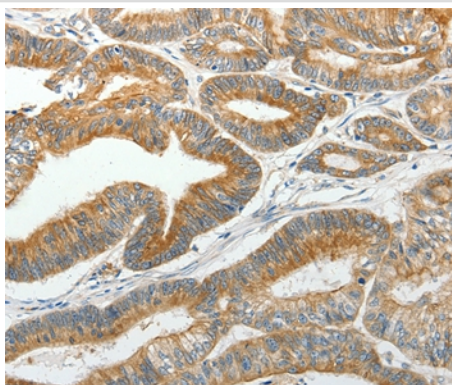
Description

Product Name	SLC12A4 Antibody
Host Species	Rabbit
Clonality	Polyclonal
Purification	Antigen affinity purification.
Applications	IHC
Species Reactivity	Hu
Specificity	The antibody detects endogenous levels of total SLC12A4 protein.
Immunogen Type	Recombinant Protein
Immunogen Description	Fusion protein corresponding to a region derived from internal residues of human solute carrier family 12 (potassium/chloride transporters), member 4
Target Name	SLC12A4
Other Names	KCC1
Accession No.	Swiss-Prot#: Q9UP95NCBI Gene ID: 6560Gene Accssion: BC021193
Uniprot	Q9UP95
GeneID	6560;
Concentration	1.1mg/ml
Formulation	Rabbit IgG in pH7.4 PBS, 0.05% NaN ₃ , 40% Glycerol.
Storage	Store at -20°C

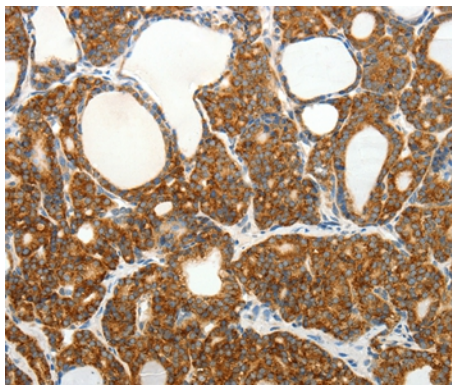
Application Details

Immunohistochemistry: 1:50-1:200

Images



Immunohistochemical analysis of paraffin-embedded Human thyroid cancer tissue using #35916 at dilution 1/30.



Immunohistochemical analysis of paraffin-embedded Human colon cancer tissue using #35916 at dilution 1/30.

Background

This gene encodes a member of the SLC12A transporter family. The encoded protein mediates the coupled movement of potassium and chloride ions across the plasma membrane. This gene is expressed ubiquitously. Multiple alternatively spliced transcript variants encoding distinct isoforms have been found for this gene. Mediates electroneutral potassium-chloride cotransport when activated by cell swelling. May contribute to cell volume homeostasis in single cells. May be involved in the regulation of basolateral Cl⁻ exit in NaCl absorbing epithelia.

Note: This product is for in vitro research use only