

## KRR1 antibody

Catalog No: #22069

Orders: [order@signalwayantibody.com](mailto:order@signalwayantibody.com)Support: [tech@signalwayantibody.com](mailto:tech@signalwayantibody.com)

## Description

Product Name	KRR1 antibody
Host Species	Rabbit
Clonality	Polyclonal
Purification	Purified by antigen-affinity chromatography.
Applications	WB IHC IF
Species Reactivity	Hu
Immunogen Type	Recombinant protein
Immunogen Description	Recombinant protein fragment contain a sequence corresponding to a region within amino acids 47 and 314 of KRR1
Target Name	KRR1
Accession No.	Swiss-Prot:Q13601Gene ID:11103
Uniprot	Q13601
GeneID	11103;
Concentration	1mg/ml
Formulation	Supplied in 0.1M Tris-buffered saline with 10% Glycerol (pH7.0). 0.01% Thimerosal was added as a preservative.
Storage	Store at -20°C for long term preservation (recommended). Store at 4°C for short term use.

## Application Details

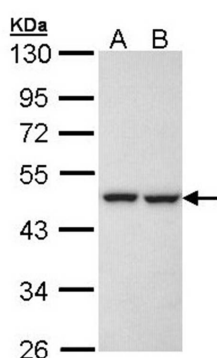
Predicted MW: 44kd

Western blotting: 1:500-1:3000

Immunohistochemistry: 1:100-1:500

Immunofluorescence: 1:100-1:200

## Images



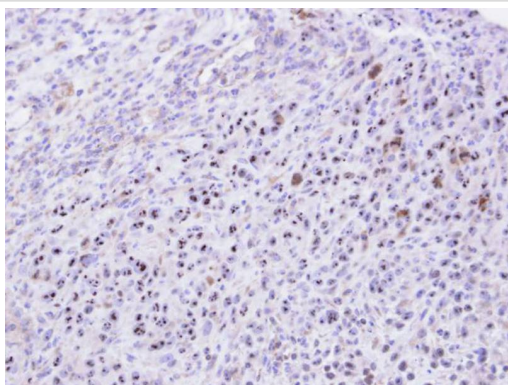
Sample (30 ug of whole cell lysate)

A: H1299

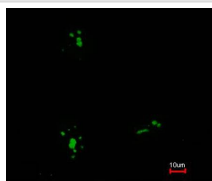
B: HeLa

10% SDS PAGE

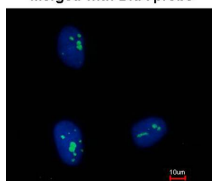
Primary antibody diluted at 1: 1000



Immunohistochemical analysis of paraffin-embedded SAS xenograft, using KRR1 antibody at 1: 500 dilution.



Merged with DNA probe



Immunofluorescence analysis of paraformaldehyde-fixed HeLa, using KRR1 antibody at 1: 500 dilution.

Note: This product is for in vitro research use only