

SOCS2 Antibody

Catalog No: #35922

Orders: order@signalwayantibody.comSupport: tech@signalwayantibody.com

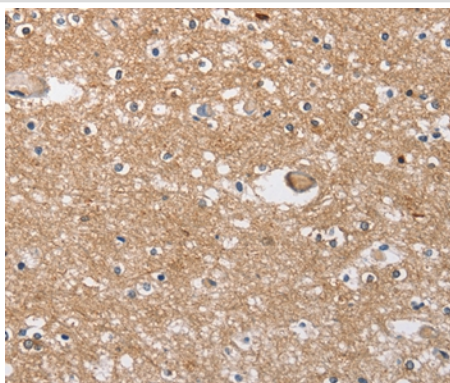
Description

Product Name	SOCS2 Antibody
Host Species	Rabbit
Clonality	Polyclonal
Purification	Antigen affinity purification.
Applications	IHC
Species Reactivity	Hu
Specificity	The antibody detects endogenous levels of total SOCS2 protein.
Immunogen Type	Recombinant Protein
Immunogen Description	Fusion protein corresponding to a region derived from internal residues of human suppressor of cytokine signaling 2
Target Name	SOCS2
Other Names	CIS2; SSI2; Cish2; SSI-2; SOCS-2; STATI2
Accession No.	Swiss-Prot#: O14508NCBI Gene ID: 8835Gene Accssion: BC010399
Uniprot	O14508
GeneID	8835;
Concentration	2.1mg/ml
Formulation	Rabbit IgG in pH7.4 PBS, 0.05% NaN3, 40% Glycerol.
Storage	Store at -20°C

Application Details

Immunohistochemistry: 1:25-1:100

Images



Immunohistochemical analysis of paraffin-embedded Human brain tissue using #35922 at dilution 1/40.

Background

This gene encodes a member of the suppressor of cytokine signaling (SOCS) family. SOCS family members are cytokine-inducible negative regulators of cytokine receptor signaling via the Janus kinase/signal transducer and activation of transcription pathway (the JAK/STAT pathway).

SOCS family proteins interact with major molecules of signaling complexes to block further signal transduction, in part, by proteasomal depletion of receptors or signal-transducing proteins via ubiquitination. The expression of this gene can be induced by a subset of cytokines, including erythropoietin, GM-CSF, IL10, interferon (IFN)-gamma and by cytokine receptors such as growth hormone receptor.

Note: This product is for in vitro research use only