

## SPIN4 Antibody

Catalog No: #35930

Orders: [order@signalwayantibody.com](mailto:order@signalwayantibody.com)Support: [tech@signalwayantibody.com](mailto:tech@signalwayantibody.com)

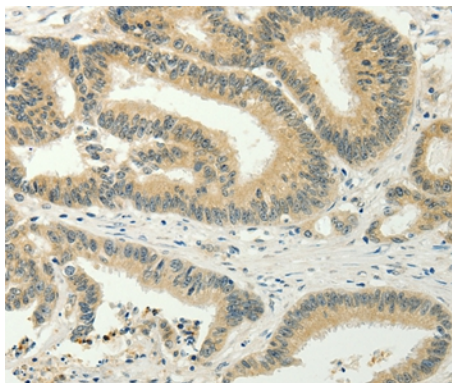
## Description

Product Name	SPIN4 Antibody
Host Species	Rabbit
Clonality	Polyclonal
Purification	Antigen affinity purification.
Applications	IHC
Species Reactivity	Hu
Specificity	The antibody detects endogenous levels of total SPIN4 protein.
Immunogen Type	Recombinant Protein
Immunogen Description	Full length fusion protein
Target Name	SPIN4
Other Names	FLJ44984;MGC133224;member 4
Accession No.	Swiss-Prot#: Q56A73NCBI Gene ID: 139886Gene Accssion: BC112360
Uniprot	Q56A73
GeneID	139886;
Concentration	0.6mg/ml
Formulation	Rabbit IgG in pH7.4 PBS, 0.05% NaN <sub>3</sub> , 40% Glycerol.
Storage	Store at -20°C

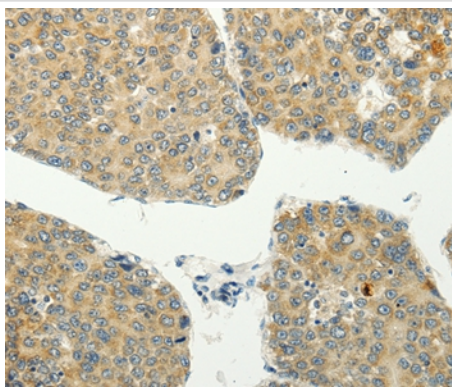
## Application Details

Immunohistochemistry: 1:25-1:100

## Images



Immunohistochemical analysis of paraffin-embedded Human colon cancer tissue using #35930 at dilution 1/20.



Immunohistochemical analysis of paraffin-embedded Human liver cancer tissue using #35930 at dilution 1/20.

## Background

This gene is a member of the SPINDLIN family. SPINDLIN was first reported as an abundant maternal transcript present in the unfertilized egg and 2-cell, but not the 8-cell, stage embryo during the transition from oocyte to embryo in the mouse. This family is involved in gametogenesis, and the expression of genes in this family can be detected in early embryos.

Note: This product is for in vitro research use only