

## MAP4K5 Antibody

Catalog No: #35950

Orders: [order@signalwayantibody.com](mailto:order@signalwayantibody.com)Support: [tech@signalwayantibody.com](mailto:tech@signalwayantibody.com)

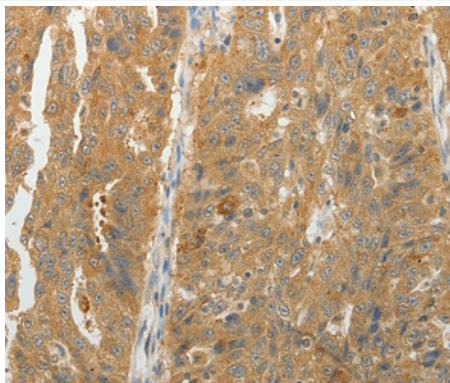
## Description

Product Name	MAP4K5 Antibody
Host Species	Rabbit
Clonality	Polyclonal
Purification	Antigen affinity purification.
Applications	IHC
Species Reactivity	Hu
Specificity	The antibody detects endogenous levels of total MAP4K5 protein.
Immunogen Type	Recombinant Protein
Immunogen Description	Fusion protein corresponding to a region derived from internal residues of human mitogen-activated protein kinase kinase kinase kinase?
Target Name	MAP4K5
Other Names	KHS; GCKR; KHS1; MAPKKKK5
Accession No.	Swiss-Prot#: Q9Y4K4NCBI Gene ID: 11183Gene Accssion: BC036013
Uniprot	Q9Y4K4
GeneID	11183;
Concentration	0.4mg/ml
Formulation	Rabbit IgG in pH7.4 PBS, 0.05% NaN <sub>3</sub> , 40% Glycerol.
Storage	Store at -20°C

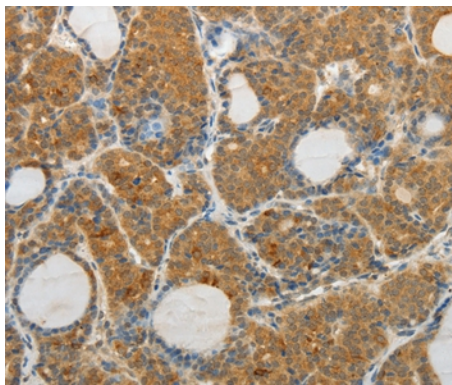
## Application Details

Immunohistochemistry: 1:15-1:50

## Images



Immunohistochemical analysis of paraffin-embedded Human ovarian cancer tissue using #35950 at dilution 1/10.



Immunohistochemical analysis of paraffin-embedded Human thyroid cancer tissue using #35950 at dilution 1/10.

## Background

This gene encodes a member of the serine/threonine protein kinase family, that is highly similar to yeast SPS1/STE20 kinase. Yeast SPS1/STE20 functions near the beginning of the MAP kinase signal cascades that is essential for yeast pheromone response. This kinase was shown to activate Jun kinase in mammalian cells, which suggested a role in stress response. Two alternatively spliced transcript variants encoding the same protein have been described for this gene.?

Note: This product is for in vitro research use only