

TFPI2 Antibody

Catalog No: #35956

Orders: order@signalwayantibody.comSupport: tech@signalwayantibody.com

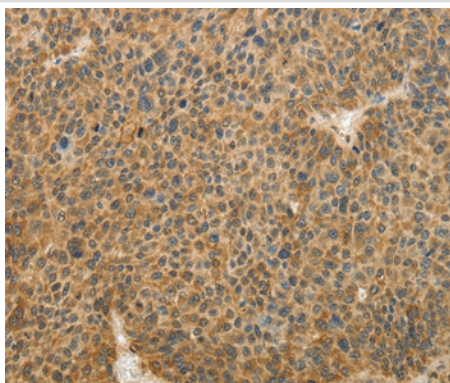
Description

Product Name	TFPI2 Antibody
Host Species	Rabbit
Clonality	Polyclonal
Purification	Antigen affinity purification.
Applications	IHC
Species Reactivity	Hu
Specificity	The antibody detects endogenous levels of total TFPI2 protein.
Immunogen Type	Recombinant Protein
Immunogen Description	Fusion protein corresponding to a region derived from internal residues of human tissue factor pathway inhibitor 2
Target Name	TFPI2
Other Names	PP5; REF1; TFPI-2
Accession No.	Swiss-Prot#: P48307NCBI Gene ID: 7980Gene Accssion: BC005330
Uniprot	P48307
GeneID	7980;
Concentration	1.1mg/ml
Formulation	Rabbit IgG in pH7.4 PBS, 0.05% NaN ₃ , 40% Glycerol.
Storage	Store at -20°C

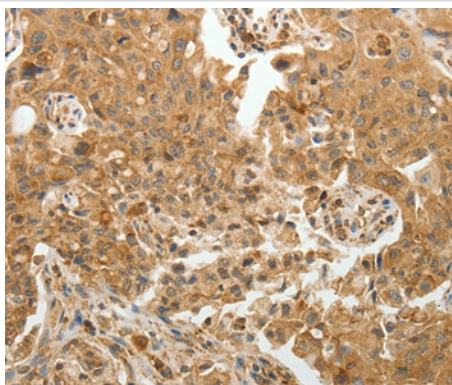
Application Details

Immunohistochemistry: 1:50-1:200

Images



Immunohistochemical analysis of paraffin-embedded Human liver cancer tissue using #35956 at dilution 1/30.



Immunohistochemical analysis of paraffin-embedded Human lung cancer tissue using #35956 at dilution 1/30.

Background

This gene encodes a member of the Kunitz-type serine proteinase inhibitor family. The protein can inhibit a variety of serine proteases including factor VIIa/tissue factor, factor Xa, plasmin, trypsin, chymotrypsin and plasma kallikrein. This gene has been identified as a tumor suppressor gene in several types of cancer. Alternative splicing results in multiple transcript variants.

Note: This product is for in vitro research use only