

TGM2 Antibody

Catalog No: #35959



Orders: [order@signalwayantibody.com](mailto:order@signalwayantibody.com)  
Support: [tech@signalwayantibody.com](mailto:tech@signalwayantibody.com)

Description

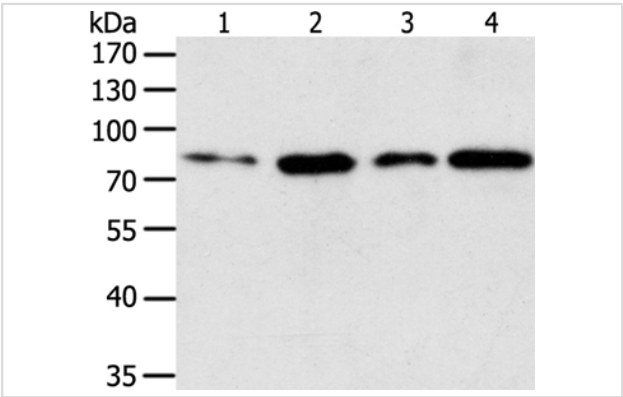
Product Name	TGM2 Antibody
Host Species	Rabbit
Clonality	Polyclonal
Purification	Antigen affinity purification.
Applications	WB IHC
Species Reactivity	Hu
Specificity	The antibody detects endogenous levels of total TGM2 protein.
Immunogen Type	Recombinant Protein
Immunogen Description	Fusion protein corresponding to residues near the C terminal of human Transglutaminase 2 (C polypeptide, protein-glutamine-gamma-glutamyltransferase)
Target Name	TGM2
Other Names	TG2; TGC; GNAH; G-ALPHA-h
Accession No.	Swiss-Prot#: P21980NCBI Gene ID: 7052Gene Accssion: BC003551
Uniprot	P21980
GeneID	7052;
SDS-PAGE MW	77kd
Concentration	0.6mg/ml
Formulation	Rabbit IgG in pH7.4 PBS, 0.05% NaN3, 40% Glycerol.
Storage	Store at -20°C

Application Details

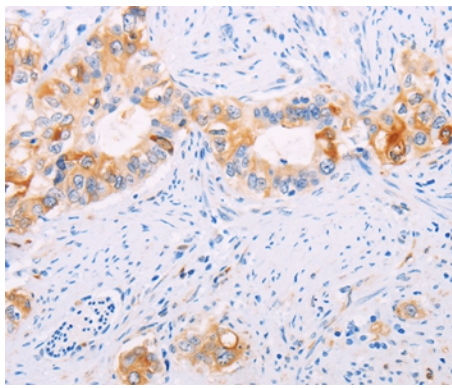
Western blotting: 1:200-1:1000

Immunohistochemistry: 1:15-1:50

Images



Gel: 10%SDS-PAGE  
Lysates (from left to right): Lovo and hela cell, human liver cancer and fetal liver tissue  
Amount of lysate: 50ug per lane  
Primary antibody: 1/150 dilution  
Secondary antibody dilution: 1/8000  
Exposure time: 1 minute



Immunohistochemical analysis of paraffin-embedded Human cervical cancer tissue using #35959 at dilution 1/15.

## Background

Transglutaminases are enzymes that catalyze the crosslinking of proteins by epsilon-gamma glutamyl lysine isopeptide bonds. While the primary structure of transglutaminases is not conserved, they all have the same amino acid sequence at their active sites and their activity is calcium-dependent. The protein encoded by this gene acts as a monomer, is induced by retinoic acid, and appears to be involved in apoptosis. Finally, the encoded protein is the autoantigen implicated in celiac disease. Two transcript variants encoding different isoforms have been found for this gene.

Note: This product is for in vitro research use only