

SPATA6 Antibody

Catalog No: #35978



Orders: order@signalwayantibody.com
Support: tech@signalwayantibody.com

Description

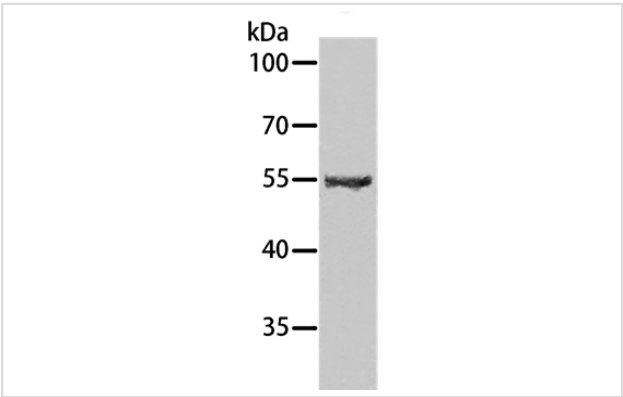
Product Name	SPATA6 Antibody
Host Species	Rabbit
Clonality	Polyclonal
Purification	Antigen affinity purification.
Applications	WB IHC
Species Reactivity	Hu
Specificity	The antibody detects endogenous levels of total SPATA6 protein.
Immunogen Type	Recombinant Protein
Immunogen Description	Fusion protein corresponding to a region derived from internal residues of human spermatogenesis associated 6
Target Name	SPATA6
Other Names	HASH; SRF1; SRF-1
Accession No.	Swiss-Prot#: Q9NWH7NCBI Gene ID: 54558Gene Accssion: BC020660
Uniprot	Q9NWH7
GeneID	54558;
SDS-PAGE MW	56kd
Concentration	1.5mg/ml
Formulation	Rabbit IgG in pH7.4 PBS, 0.05% NaN3, 40% Glycerol.
Storage	Store at -20°C

Application Details

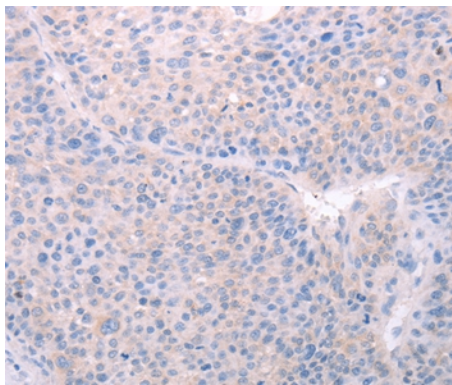
Western blotting: 1:200-1:1000

Immunohistochemistry: 1:25-1:100

Images



Gel: 8%SDS-PAGE
Lysates (from left to right): Human testis tissue
Amount of lysate: 60ug per lane
Primary antibody: 1/1000 dilution
Secondary antibody dilution: 1/8000
Exposure time: 5 minutes



Immunohistochemical analysis of paraffin-embedded Human liver cancer tissue using #35978 at dilution 1/40.

Background

The Spata6 gene consists of 15 exons ranging in size between 40 and 596 bp. It may play a role in spermatid maturation or sperm function. The Spata6 gene was localized to chromosome 5, region q34-35 in the rat and to chromosome 1, region p32-35 in the human.

Note: This product is for in vitro research use only