

# ATPIF1 Antibody

Catalog No: #35986



Orders: [order@signalwayantibody.com](mailto:order@signalwayantibody.com)  
Support: [tech@signalwayantibody.com](mailto:tech@signalwayantibody.com)

## Description

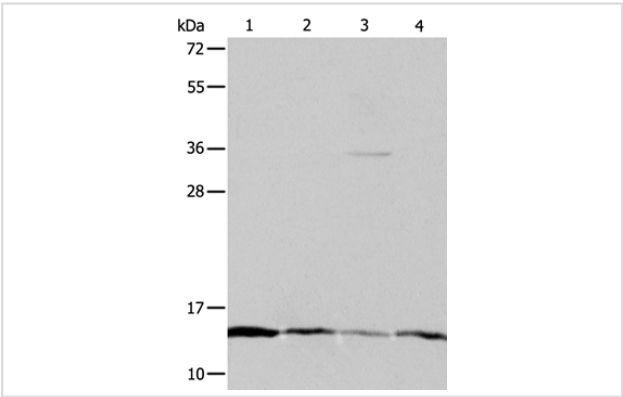
Product Name	ATPIF1 Antibody
Host Species	Rabbit
Clonality	Polyclonal
Purification	Antigen affinity purification.
Applications	WB IHC
Species Reactivity	Hu
Specificity	The antibody detects endogenous levels of total ATPIF1 protein.
Immunogen Type	Recombinant Protein
Immunogen Description	Fusion protein corresponding to a region derived from internal residues of human ATPase inhibitory factor 1
Target Name	ATPIF1
Other Names	IP; ATPi; ATPIP
Accession No.	Swiss-Prot#: Q9UII2NCBI Gene ID: 93974Gene Accssion: BC009677
Uniprot	Q9UII2
GeneID	93974;
SDS-PAGE MW	12kd
Concentration	2.1mg/ml
Formulation	Rabbit IgG in pH7.4 PBS, 0.05% NaN3, 40% Glycerol.
Storage	Store at -20°C

## Application Details

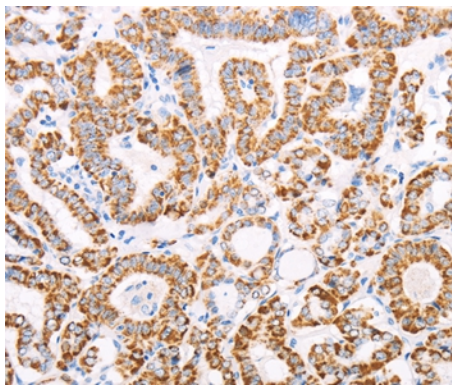
Western blotting: 1:1000-1:5000

Immunohistochemistry: 1:50-1:200

## Images



Gel: 16%+12%+10%SDS-PAGE  
Lysates (from left to right): Hela, Jurkat, MCF7 and A431 cell  
Amount of lysate: 40ug per lane  
Primary antibody: 1/1200 dilution  
Secondary antibody dilution: 1/8000  
Exposure time: 2 minutes



Immunohistochemical analysis of paraffin-embedded Human thyroid cancer tissue using #35986 at dilution 1/50.

## Background

ATPase inhibitor, mitochondrial is an enzyme that in humans is encoded by the *ATP1F1* gene. This gene encodes a mitochondrial ATPase inhibitor. Alternative splicing occurs at this locus and three transcript variants encoding distinct isoforms have been identified. It prevents ATPase from switching to ATP hydrolysis during collapse of the electrochemical gradient, for example during oxygen deprivation ATP synthase inhibitor forms a one to one complex with the F1 ATPase, possibly by binding at the alpha-beta interface. It is thought to inhibit ATP synthesis by preventing the release of ATP. The inhibitor has two oligomeric states, dimer (the active state) and tetramer.

Note: This product is for in vitro research use only