

SERPINA5 Antibody

Catalog No: #35991

Orders: order@signalwayantibody.comSupport: tech@signalwayantibody.com

Description

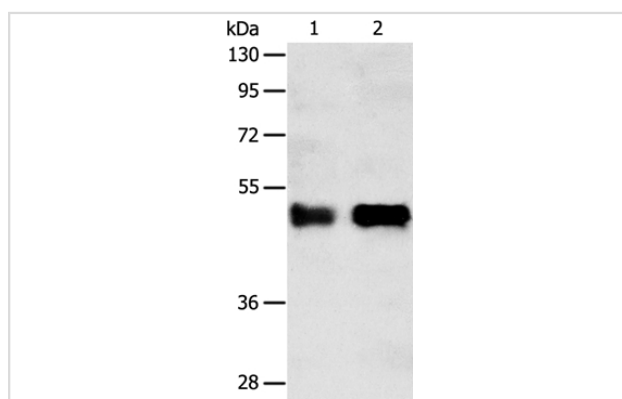
Product Name	SERPINA5 Antibody
Host Species	Rabbit
Clonality	Polyclonal
Purification	Antigen affinity purification.
Applications	WB IHC
Species Reactivity	Hu
Specificity	The antibody detects endogenous levels of total SERPINA5 protein.
Immunogen Type	Recombinant Protein
Immunogen Description	Fusion protein corresponding to residues near the C terminal of human Serpin peptidase inhibitor, clade A (alpha-1 antiproteinase, antitrypsin), member 5
Target Name	SERPINA5
Other Names	PCI; PAI3; PAI-3; PCI-B; PROCI; PLANH3
Accession No.	Swiss-Prot#: P05154NCBI Gene ID: 5104Gene Accssion: BC008915
Uniprot	P05154
GeneID	5104;
SDS-PAGE MW	46kd
Concentration	1.5mg/ml
Formulation	Rabbit IgG in pH7.4 PBS, 0.05% NaN ₃ , 40% Glycerol.
Storage	Store at -20°C

Application Details

Western blotting: 1:1000-1:5000

Immunohistochemistry: 1:50-1:200

Images



Gel: 10%SDS-PAGE

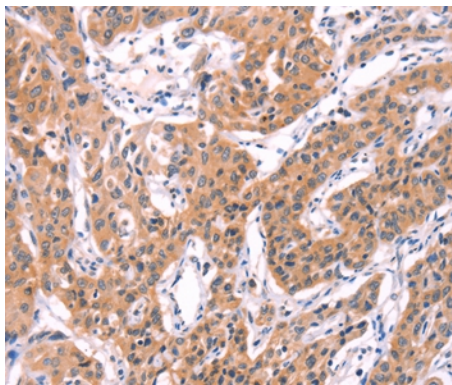
Lysates (from left to right): Human liver cancer tissue and A549 cell

Amount of lysate: 40ug per lane

Primary antibody: 1/750 dilution

Secondary antibody dilution: 1/8000

Exposure time: 10 minutes



Immunohistochemical analysis of paraffin-embedded Human lung cancer tissue using #35991 at dilution 1/40.

Background

The protein encoded by this gene is a member of the serpin family of proteins, a group of proteins that inhibit serine proteases. This gene is one in a cluster of serpin genes located on the q arm of chromosome 14. This family member is a glycoprotein that can inhibit several serine proteases, including protein C and various plasminogen activators and kallikreins, and it thus plays diverse roles in hemostasis and thrombosis in multiple organs.

Note: This product is for in vitro research use only