

RAB2B antibody

Catalog No: #22077

Orders: order@signalwayantibody.comSupport: tech@signalwayantibody.com

Description

Product Name	RAB2B antibody
Host Species	Rabbit
Clonality	Polyclonal
Purification	Purified by antigen-affinity chromatography.
Applications	WB IF
Species Reactivity	Hu
Immunogen Type	Recombinant protein
Immunogen Description	Recombinant protein fragment contain a sequence corresponding to a region within amino acids 1 and 186 of RAB2B
Target Name	RAB2B
Accession No.	Swiss-Prot:Q8WUD1Gene ID:84932
Uniprot	Q8WUD1
GeneID	84932;
Concentration	0.8mg/ml
Formulation	Supplied in 0.1M Tris-buffered saline with 10% Glycerol (pH7.0). 0.01% Thimerosal was added as a preservative.
Storage	Store at -20°C for long term preservation (recommended). Store at 4°C for short term use.

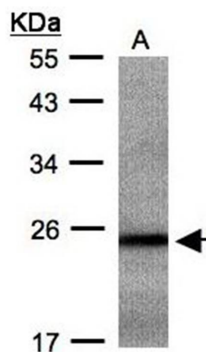
Application Details

Predicted MW: 24kd

Western blotting: 1:500-1:3000

Immunofluorescence: 1:100-1:200

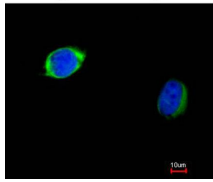
Images



Sample(30 ug whole cell lysate)
A: Hep G2
12% SDS PAGE
Primary antibody diluted at 1: 500



Merged with DNA probe



Immunofluorescence analysis of paraformaldehyde-fixed HeLa, using RAB2B antibody at 1: 200 dilution.

Background

Members of the Rab protein family are nontransforming monomeric GTP-binding proteins of the Ras superfamily that contain 4 highly conserved regions involved in GTP binding and hydrolysis. Rab proteins are prenylated, membrane-bound proteins involved in vesicular fusion and trafficking; see MIM 179508.[supplied by OMIM]

Note: This product is for in vitro research use only