

AADACL2 Antibody

Catalog No: #36002

Orders: order@signalwayantibody.comSupport: tech@signalwayantibody.com

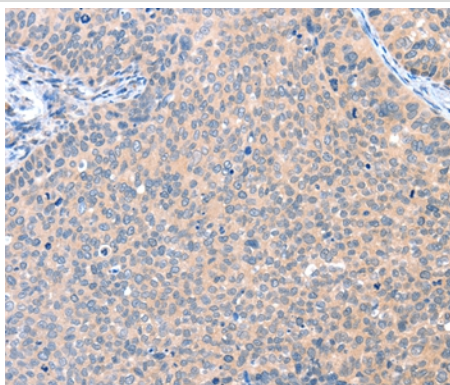
Description

Product Name	AADACL2 Antibody
Host Species	Rabbit
Clonality	Polyclonal
Purification	Antigen affinity purification.
Applications	IHC
Species Reactivity	Hu
Specificity	The antibody detects endogenous levels of total AADACL2 protein.
Immunogen Type	Recombinant Protein
Immunogen Description	Fusion protein corresponding to residues near the C terminal of human arylacetamide deacetylase-like 2
Target Name	AADACL2
Other Names	ADCL2;MGC72001; Arylacetamide deacetylase-like 2;
Accession No.	Swiss-Prot#: Q6P093NCBI Gene ID: 344752Gene Accssion: BC065724
Uniprot	Q6P093
GeneID	344752;
Concentration	1.1mg/ml
Formulation	Rabbit IgG in pH7.4 PBS, 0.05% NaN ₃ , 40% Glycerol.
Storage	Store at -20°C

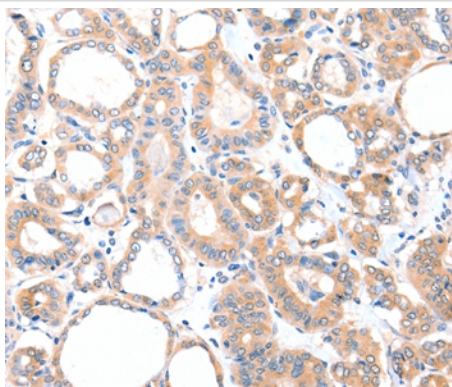
Application Details

Immunohistochemistry: 1:25-1:100

Images



Immunohistochemical analysis of paraffin-embedded Human cervical cancer tissue using #36002 at dilution 1/25.



Immunohistochemical analysis of paraffin-embedded Human thyroid cancer tissue using #36002 at dilution 1/25.

Background

AADC is a 45 kDa membrane-associated hydrolase highly expressed in the human liver that has been implicated in the hydrolysis of arylacetamide xenobiotics including flutamide and phenacetin.^{556B} C560AADC is highly homologous to several related lipases, AADACL1, 2, and 4, the latter two of which remain completely unannotated. Overexpression of AADC in a rat hepatoma cell line produces changes in cellular TG levels, apolipoprotein B secretion, and fatty acid oxidation, but the mechanism for these effects remains unclear.⁵⁶¹ Candidate endogenous substrates, selective inhibitors, or knockout mice have not, to our knowledge, been described for AADC or the related enzymes AADACL2 and AADACL4.

Note: This product is for in vitro research use only