

ACSBG1 Antibody

Catalog No: #36024

Orders: order@signalwayantibody.comSupport: tech@signalwayantibody.com

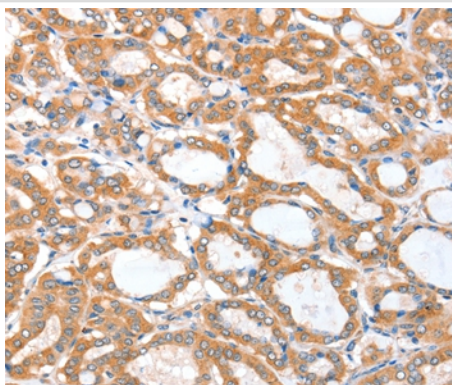
Description

Product Name	ACSBG1 Antibody
Host Species	Rabbit
Clonality	Polyclonal
Purification	Antigen affinity purification.
Applications	IHC
Species Reactivity	Hu
Specificity	The antibody detects endogenous levels of total ACSBG1 protein.
Immunogen Type	Recombinant Protein
Immunogen Description	Fusion protein corresponding to residues near the C terminal of human acyl-CoA synthetase bubblegum family member 1
Target Name	ACSBG1
Other Names	BG; BG1; BGM; LPD; GR-LACS
Accession No.	Swiss-Prot#: Q96GR2NCBI Gene ID: 23205Gene Accssion: BC009289
Uniprot	Q96GR2
GeneID	23205;
Concentration	1.1mg/ml
Formulation	Rabbit IgG in pH7.4 PBS, 0.05% NaN ₃ , 40% Glycerol.
Storage	Store at -20°C

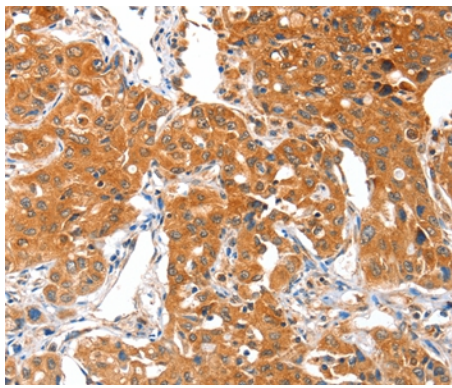
Application Details

Immunohistochemistry: 1:25-1:100

Images



Immunohistochemical analysis of paraffin-embedded Human thyroid cancer tissue using #36024 at dilution 1/25.



Immunohistochemical analysis of paraffin-embedded Human lung cancer tissue using #36024 at dilution 1/25.

Background

The protein encoded by this gene possesses long-chain acyl-CoA synthetase activity. It is thought to play a central role in brain very long-chain fatty acids metabolism and myelinogenesis.

Note: This product is for in vitro research use only