

FHL5 Antibody

Catalog No: #36026

Orders: order@signalwayantibody.comSupport: tech@signalwayantibody.com

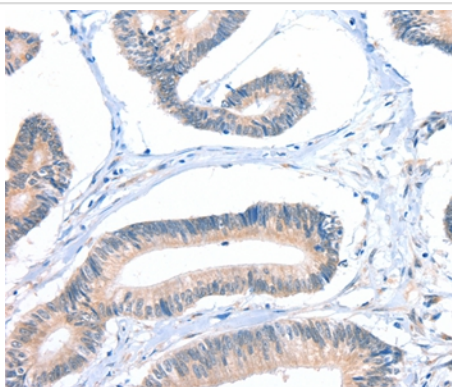
Description

Product Name	FHL5 Antibody
Host Species	Rabbit
Clonality	Polyclonal
Purification	Antigen affinity purification.
Applications	IHC
Species Reactivity	Hu
Specificity	The antibody detects endogenous levels of total FHL5 protein.
Immunogen Type	Recombinant Protein
Immunogen Description	Fusion protein corresponding to a region derived from internal residues of human four and a half LIM domains 5
Target Name	FHL5
Other Names	ACT; dJ393D12.2; RP3-393D12.2
Accession No.	Swiss-Prot#: Q5TD97NCBI Gene ID: 9457Gene Accssion: BC021723
Uniprot	Q5TD97
GeneID	9457;
Concentration	0.9mg/ml
Formulation	Rabbit IgG in pH7.4 PBS, 0.05% NaN ₃ , 40% Glycerol.
Storage	Store at -20°C

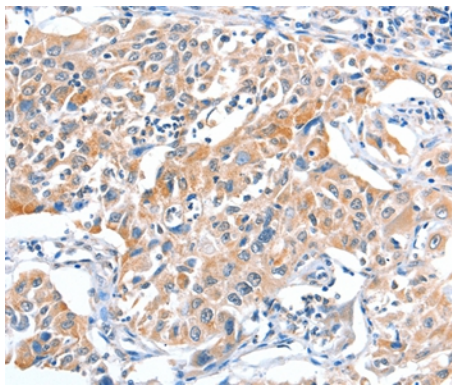
Application Details

Immunohistochemistry: 1:25-1:100

Images



Immunohistochemical analysis of paraffin-embedded Human colon cancer tissue using #36026 at dilution 1/20.



Immunohistochemical analysis of paraffin-embedded Human lung cancer tissue using #36026 at dilution 1/20.

Background

The protein encoded by this gene is coordinately expressed with activator of cAMP-responsive element modulator (CREM). It is associated with CREM and confers a powerful transcriptional activation function. CREM acts as a transcription factor essential for the differentiation of spermatids into mature spermatozoa. There are multiple polyadenylation sites found in this gene. Alternative splicing results in multiple transcript variants encoding the same protein.

Note: This product is for in vitro research use only