

ADAM20 Antibody

Catalog No: #36039



Orders: order@signalwayantibody.com
Support: tech@signalwayantibody.com

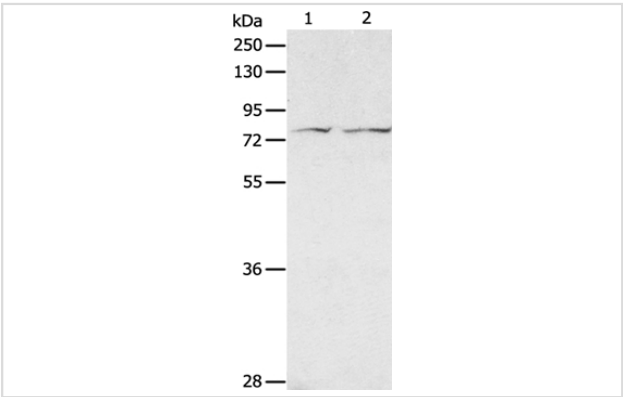
Description

Product Name	ADAM20 Antibody
Host Species	Rabbit
Clonality	Polyclonal
Purification	Antigen affinity purification.
Applications	WB IHC
Species Reactivity	Hu
Specificity	The antibody detects endogenous levels of total ADAM20 protein.
Immunogen Type	Recombinant Protein
Immunogen Description	Fusion protein corresponding to a region derived from internal residues of human ADAM metallopeptidase domain 20
Target Name	ADAM20
Other Names	ADA20; ADAM 20;
Accession No.	Swiss-Prot#: O43506NCBI Gene ID: 8748Gene Accssion: BC025378
Uniprot	O43506
GeneID	8748;
SDS-PAGE MW	82kd
Concentration	1.1mg/ml
Formulation	Rabbit IgG in pH7.4 PBS, 0.05% NaN3, 40% Glycerol.
Storage	Store at -20°C

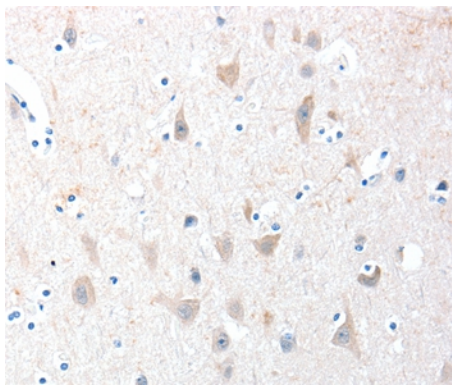
Application Details

Western blotting: 1:100-1:500
Immunohistochemistry: 1:25-1:100

Images



Gel: 8%SDS-PAGE
Lysates (from left to right): PC3 and hela cell
Amount of lysate: 40ug per lane
Primary antibody: 1/100 dilution
Secondary antibody dilution: 1/8000
Exposure time: 10 seconds



Immunohistochemical analysis of paraffin-embedded Human brain tissue using #36039 at dilution 1/30.

Background

This gene encodes a member of the ADAM (a disintegrin and metalloprotease domain) family. Members of this family are membrane-anchored proteins structurally related to snake venom disintegrins, and have been implicated in a variety of biological processes involving cell-cell and cell-matrix interactions, including fertilization, muscle development, and neurogenesis. The expression of this gene is testis-specific.

Note: This product is for in vitro research use only