

ARL8A Antibody

Catalog No: #36138

Orders: order@signalwayantibody.comSupport: tech@signalwayantibody.com

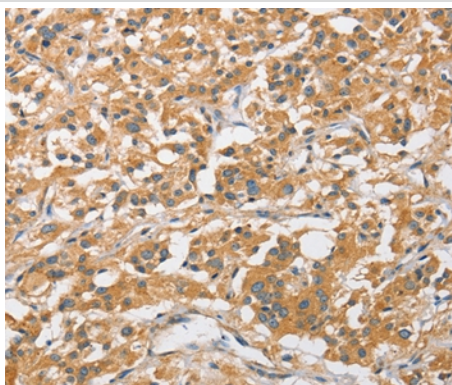
Description

Product Name	ARL8A Antibody
Host Species	Rabbit
Clonality	Polyclonal
Purification	Antigen affinity purification.
Applications	IHC
Species Reactivity	Hu
Specificity	The antibody detects endogenous levels of total ARL8A protein.
Immunogen Type	Recombinant Protein
Immunogen Description	Full length fusion protein
Target Name	ARL8A
Other Names	GIE2; ARL10B
Accession No.	Swiss-Prot#: Q96BM9NCBI Gene ID: 127829Gene Accssion: BC015408
Uniprot	Q96BM9
GeneID	127829;
Concentration	0.9mg/ml
Formulation	Rabbit IgG in pH7.4 PBS, 0.05% NaN ₃ , 40% Glycerol.
Storage	Store at -20°C

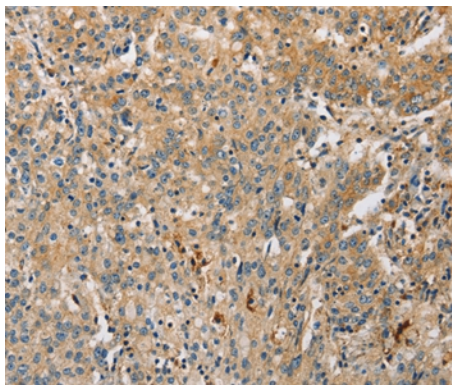
Application Details

Immunohistochemistry: 1:25-1:100

Images



Immunohistochemical analysis of paraffin-embedded Human thyroid cancer tissue using #36138 at dilution 1/20.



Immunohistochemical analysis of paraffin-embedded Human gastric cancer tissue using #36138 at dilution 1/20.

Background

ARL8A (ADP-ribosylation factor-like protein 8A), also known as ARL10B or GIE2, is a 186 amino acid protein that localizes to the membrane of late endosomes. Expressed ubiquitously, ARL8A is thought to play a role in lysosomal motility and may also be involved in chromosomal segregation events. The gene encoding ARL8A maps to human chromosome 1, which spans 260 million base pairs, houses over 3,000 genes and comprises nearly 8% of the human genome.

Note: This product is for in vitro research use only