

## ATG4D Antibody

Catalog No: #36156

Orders: [order@signalwayantibody.com](mailto:order@signalwayantibody.com)Support: [tech@signalwayantibody.com](mailto:tech@signalwayantibody.com)

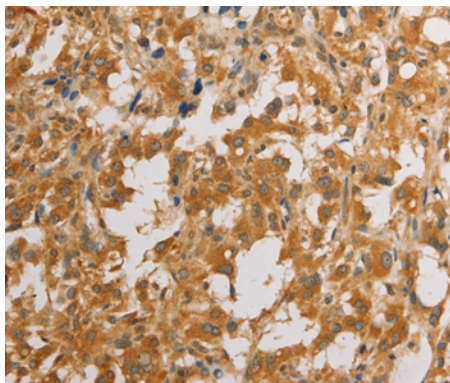
## Description

Product Name	ATG4D Antibody
Host Species	Rabbit
Clonality	Polyclonal
Purification	Antigen affinity purification.
Applications	IHC
Species Reactivity	Hu
Specificity	The antibody detects endogenous levels of total ATG4D protein.
Immunogen Type	Recombinant Protein
Immunogen Description	Full length fusion protein
Target Name	ATG4D
Other Names	APG4D; AUTL4; APG4-D
Accession No.	Swiss-Prot#: Q86TL0NCBI Gene ID: 84971Gene Accssion: BC007639
Uniprot	Q86TL0
GeneID	84971;
Concentration	1.7mg/ml
Formulation	Rabbit IgG in pH7.4 PBS, 0.05% NaN <sub>3</sub> , 40% Glycerol.
Storage	Store at -20°C

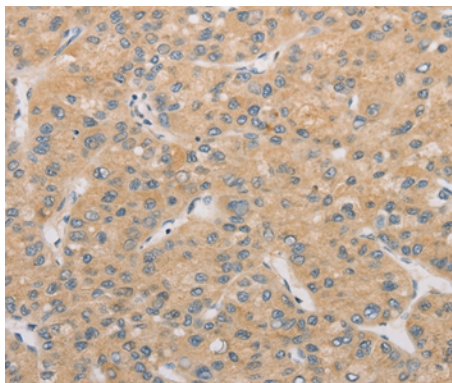
## Application Details

Immunohistochemistry: 1:50-1:200

## Images



Immunohistochemical analysis of paraffin-embedded Human thyroid cancer tissue using #36156 at dilution 1/40.



Immunohistochemical analysis of paraffin-embedded Human liver cancer tissue using #36156 at dilution 1/40.

## Background

Autophagy is the process by which endogenous proteins and damaged organelles are destroyed intracellularly. Autophagy is postulated to be essential for cell homeostasis and cell remodeling during differentiation, metamorphosis, non-apoptotic cell death, and aging. Reduced levels of autophagy have been described in some malignant tumors, and a role for autophagy in controlling the unregulated cell growth linked to cancer has been proposed. This gene belongs to the autophagy-related protein 4 (Atg4) family of C54 endopeptidases. Members of this family encode proteins that play a role in the biogenesis of autophagosomes, which sequester the cytosol and organelles for degradation by lysosomes.

Note: This product is for in vitro research use only