

SAE1 Antibody

Catalog No: #36160

Orders: order@signalwayantibody.com

Support: tech@signalwayantibody.com

Description

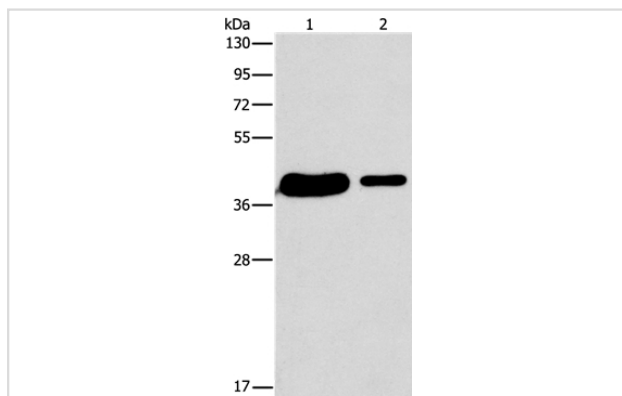
| | |
|-----------------------|---|
| Product Name | SAE1 Antibody |
| Host Species | Rabbit |
| Clonality | Polyclonal |
| Purification | Antigen affinity purification. |
| Applications | WB IHC |
| Species Reactivity | Hu |
| Specificity | The antibody detects endogenous levels of total SAE1 protein. |
| Immunogen Type | Recombinant Protein |
| Immunogen Description | Full length fusion protein |
| Target Name | SAE1 |
| Other Names | AOS1; SUA1; UBLE1A; HSPC140 |
| Accession No. | Swiss-Prot#: Q9UBE0NCBI Gene ID: 10055Gene Accssion: BC000344 |
| Uniprot | Q9UBE0 |
| GeneID | 10055; |
| SDS-PAGE MW | 38kd |
| Concentration | 0.5mg/ml |
| Formulation | Rabbit IgG in pH7.4 PBS, 0.05% NaN ₃ , 40% Glycerol. |
| Storage | Store at -20°C |

Application Details

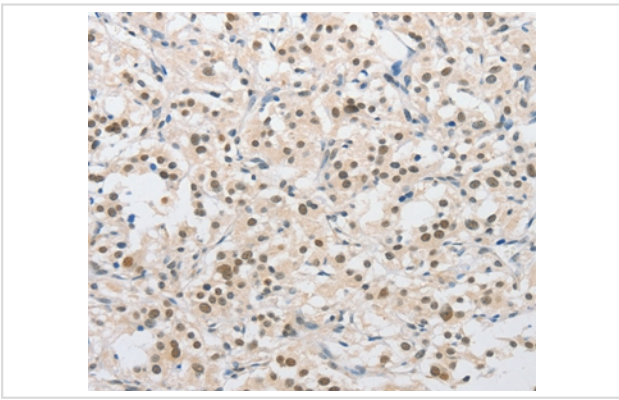
Western blotting: 1:500-1:2000

Immunohistochemistry: 1:15-1:50

Images



Gel: 15%SDS-PAGE
 Lysates (from left to right): 293T and A431 cell
 Amount of lysate: 40ug per lane
 Primary antibody: 1/400 dilution
 Secondary antibody dilution: 1/8000
 Exposure time: 30 seconds



Immunohistochemical analysis of paraffin-embedded Human thyroid cancer tissue using #36160 at dilution 1/15.

Background

Posttranslational modification of proteins by the addition of the small protein SUMO, or sumoylation, regulates protein structure and intracellular localization. SAE1 and UBA2 form a heterodimer that functions as a SUMO-activating enzyme for the sumoylation of proteins.

Note: This product is for in vitro research use only