

MAP4K2 Antibody

Catalog No: #36189

Orders: order@signalwayantibody.comSupport: tech@signalwayantibody.com

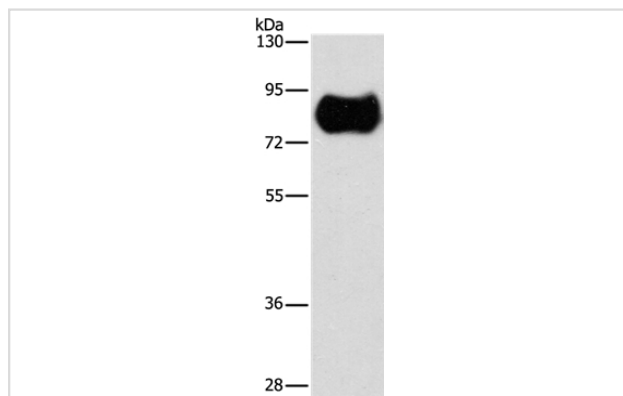
Description

Product Name	MAP4K2 Antibody
Host Species	Rabbit
Clonality	Polyclonal
Purification	Antigen affinity purification.
Applications	WB
Species Reactivity	Hu
Specificity	The antibody detects endogenous levels of total MAP4K2 protein.
Immunogen Type	Recombinant Protein
Immunogen Description	Fusion protein corresponding to residues near the C terminal of human mitogen-activated protein kinase kinase kinase 2
Target Name	MAP4K2
Other Names	GCK; BL44; RAB8IP
Accession No.	Swiss-Prot#: Q12851NCBI Gene ID: 5871Gene Accssion: BC047865
Uniprot	Q12851
GeneID	5871;
SDS-PAGE MW	92kd
Concentration	1.8mg/ml
Formulation	Rabbit IgG in pH7.4 PBS, 0.05% NaN ₃ , 40% Glycerol.
Storage	Store at -20°C

Application Details

Western blotting: 1:1000-1:5000

Images



Gel: 8%SDS-PAGE
 Lysates (from left to right): Human fetal brain tissue
 Amount of lysate: 40ug per lane
 Primary antibody: 1/900 dilution
 Secondary antibody dilution: 1/8000
 Exposure time: 30 seconds

Background

The protein encoded by this gene is a member of the serine/threonine protein kinase family. Although this kinase is found in many tissues, its

expression in lymphoid follicles is restricted to the cells of germinal centre, where it may participate in B-cell differentiation. This kinase can be activated by TNF-alpha, and has been shown to specifically activate MAP kinases. This kinase is also found to interact with TNF receptor-associated factor 2 (TRAF2), which is involved in the activation of MAP3K1/MEKK1.?

Note: This product is for in vitro research use only