

Peflin antibody

Catalog No: #22097



Orders: order@signalwayantibody.com
Support: tech@signalwayantibody.com

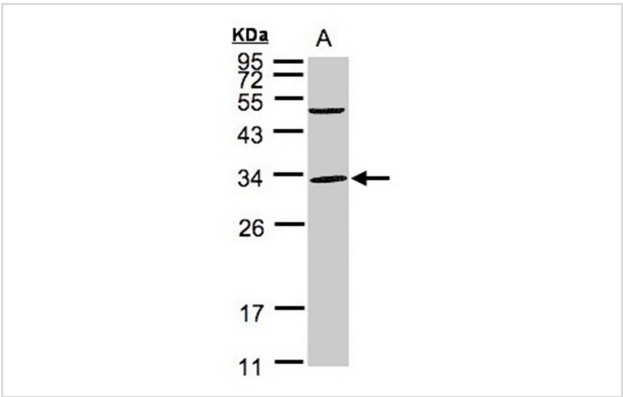
Description

Product Name	Peflin antibody
Host Species	Rabbit
Clonality	Polyclonal
Purification	Purified by antigen-affinity chromatography.
Applications	WB IHC IF
Species Reactivity	Hu
Immunogen Type	Recombinant protein
Immunogen Description	Recombinant protein fragment contain a sequence corresponding to a region within amino acids 77 and 265 of Peflin
Target Name	Peflin
Accession No.	Swiss-Prot:Q9UBV8Gene ID:553115
Uniprot	Q9UBV8
GeneID	553115;
Concentration	1mg/ml
Formulation	Supplied in 0.1M Tris-buffered saline with 10% Glycerol (pH7.0). 0.01% Thimerosal was added as a preservative.
Storage	Store at -20°C for long term preservation (recommended). Store at 4°C for short term use.

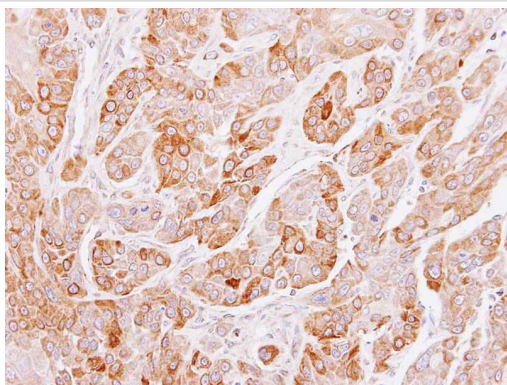
Application Details

Predicted MW: 30kd
Western blotting: 1:500-1:3000
Immunohistochemistry: 1:100-1:250
Immunofluorescence: 1:100-1:200

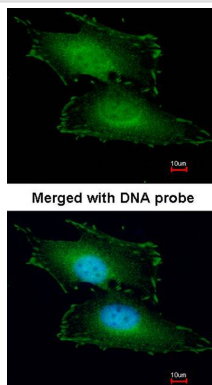
Images



Sample(30 ug whole cell lysate)
A: 293T
12% SDS PAGE
Primary antibody diluted at 1: 1000



Immunohistochemical analysis of paraffin-embedded SCC4 xenograft, using PEF1 antibody at 1: 100 dilution.



Immunofluorescence analysis of paraformaldehyde-fixed HeLa, using Peflin antibody at 1: 200 dilution.

Background

PEF1 is a Ca^{2+} -binding protein that belongs to the penta-EF-hand (PEF) protein family, which includes the calpain small subunit (CAPNS1; MIM 114170), sorcin (SRI; MIM 182520), grancalcin (GCA; MIM 607030), and ALG2 (PDCD6; MIM 601057) (Kitaura et al., 2001 [PubMed 11278427]).[supplied by OMIM]

Note: This product is for in vitro research use only