

GPM6A Antibody

Catalog No: #36219

Orders: order@signalwayantibody.comSupport: tech@signalwayantibody.com

Description

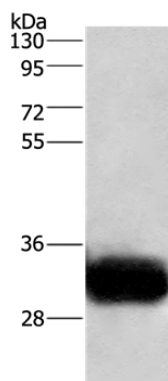
Product Name	GPM6A Antibody
Host Species	Rabbit
Clonality	Polyclonal
Purification	Antigen affinity purification.
Applications	WB IHC
Species Reactivity	Hu
Specificity	The antibody detects endogenous levels of total GPM6A protein.
Immunogen Type	Recombinant Protein
Immunogen Description	Fusion protein corresponding to a region derived from internal residues of human glycoprotein M6A
Target Name	GPM6A
Other Names	M6A; GPM6
Accession No.	Swiss-Prot#: P51674NCBI Gene ID: 2823Gene Accssion: BC022508
Uniprot	P51674
GeneID	2823;
SDS-PAGE MW	31kd
Concentration	1.9mg/ml
Formulation	Rabbit IgG in pH7.4 PBS, 0.05% NaN ₃ , 40% Glycerol.
Storage	Store at -20°C

Application Details

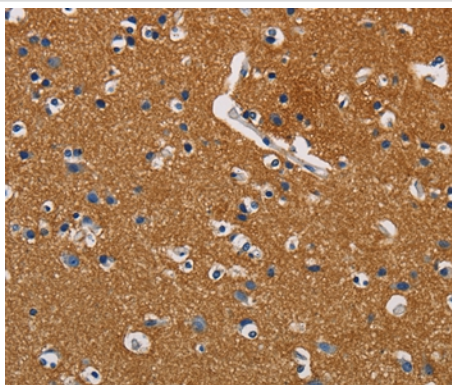
Western blotting: 1:1000-1:5000

Immunohistochemistry: 1:50-1:200

Images



Gel: 8%SDS-PAGE
Lysates (from left to right): Human fetal brain tissue
Amount of lysate: 20ug per lane
Primary antibody: 1/950 dilution
Secondary antibody dilution: 1/8000
Exposure time: 1 second



Immunohistochemical analysis of paraffin-embedded Human brain cancer tissue using #36219 at dilution 1/40.

Background

Neuronal membrane glycoprotein M6-a is a protein that in humans is encoded by the GPM6A gene. Involved in neuronal differentiation, including differentiation and migration of neuronal stem cells. Plays a role in neuronal plasticity and is involved in neurite and filopodia outgrowth, filopodia motility and probably synapse formation. GPM6A-induced filopodia formation involves mitogen-activated protein kinase (MAPK) and Src signaling pathways. May be involved in neuronal NGF-dependent Ca^{2+} influx. May be involved in regulation of endocytosis and intracellular trafficking of G-protein-coupled receptors (GPCRs); enhances internalization and recycling of mu-type opioid receptor.

Note: This product is for in vitro research use only