

HSD3a antibody

Catalog No: #22100



Orders: [order@signalwayantibody.com](mailto:order@signalwayantibody.com)  
Support: [tech@signalwayantibody.com](mailto:tech@signalwayantibody.com)

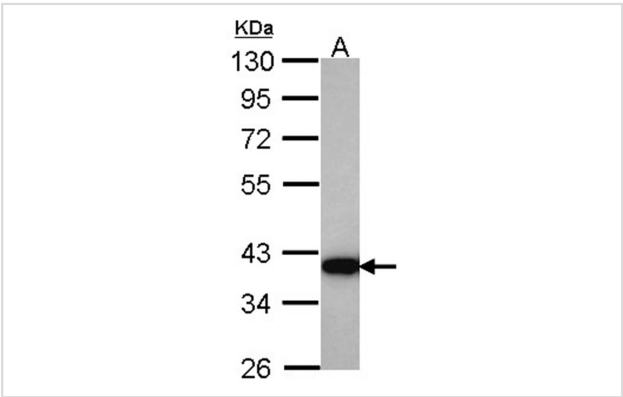
Description

|                       |                                                                                                                 |
|-----------------------|-----------------------------------------------------------------------------------------------------------------|
| Product Name          | HSD3a antibody                                                                                                  |
| Host Species          | Rabbit                                                                                                          |
| Clonality             | Polyclonal                                                                                                      |
| Purification          | Purified by antigen-affinity chromatography.                                                                    |
| Applications          | WB IHC                                                                                                          |
| Species Reactivity    | Hu                                                                                                              |
| Immunogen Type        | Recombinant protein                                                                                             |
| Immunogen Description | Recombinant protein fragment contain a sequence corresponding to a region within amino acids 1 and 187 of HSD3a |
| Target Name           | HSD3a                                                                                                           |
| Other Names           | 3-alpha-HSD                                                                                                     |
| Accession No.         | Swiss-Prot:P17516Gene ID:1109                                                                                   |
| Uniprot               | P17516                                                                                                          |
| GeneID                | 1109;                                                                                                           |
| Concentration         | 0.8mg/ml                                                                                                        |
| Formulation           | Supplied in 0.1M Tris-buffered saline with 10% Glycerol (pH7.0). 0.01% Thimerosal was added as a preservative.  |
| Storage               | Store at -20°C for long term preservation (recommended). Store at 4°C for short term use.                       |

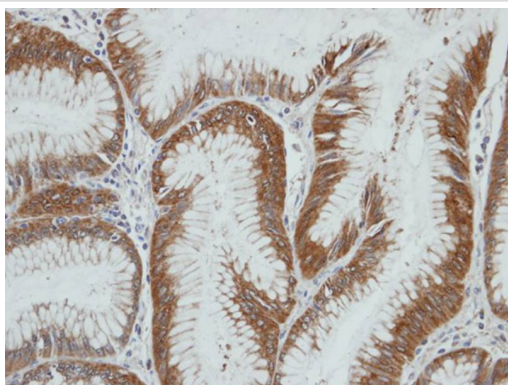
Application Details

|                                   |
|-----------------------------------|
| Predicted MW: 37kd                |
| Western blotting: 1:500-1:3000    |
| Immunohistochemistry: 1:100-1:250 |

Images



Sample (30 ug of whole cell lysate)  
A: Hela  
10% SDS PAGE  
HSD3a antibody diluted at 1: 1000



Immunohistochemical analysis of paraffin-embedded gastric ca, using AKR1C4 antibody at 1: 100 dilution.

## Background

This gene encodes a member of the aldo/keto reductase superfamily, which consists of more than 40 known enzymes and proteins. These enzymes catalyze the conversion of aldehydes and ketones to their corresponding alcohols by utilizing NADH and/or NADPH as cofactors. The enzymes display overlapping but distinct substrate specificity. This enzyme catalyzes the bioreduction of chlordane, a toxic organochlorine pesticide, to chlordane alcohol in liver. This gene shares high sequence identity with three other gene members and is clustered with those three genes at chromosome 10p15-p14. [provided by RefSeq]

Note: This product is for in vitro research use only