

ABI3BP Antibody

Catalog No: #36249

Orders: order@signalwayantibody.comSupport: tech@signalwayantibody.com

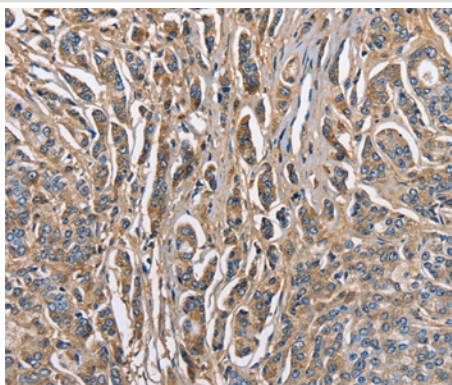
Description

Product Name	ABI3BP Antibody
Host Species	Rabbit
Clonality	Polyclonal
Purification	Antigen affinity purification.
Applications	IHC
Species Reactivity	Hu
Specificity	The antibody detects endogenous levels of total ABI3BP protein.
Immunogen Type	Recombinant Protein
Immunogen Description	Fusion protein corresponding to a region derived from internal residues of human ABI family, member 3 (NESH) binding protein
Target Name	ABI3BP
Other Names	TARSH; NESHBP
Accession No.	Swiss-Prot#: Q7Z7G0NCBI Gene ID: 25890Gene Accssion: BC030221
Uniprot	Q7Z7G0
GeneID	25890;
Concentration	2.4mg/ml
Formulation	Rabbit IgG in pH7.4 PBS, 0.05% NaN ₃ , 40% Glycerol.
Storage	Store at -20°C

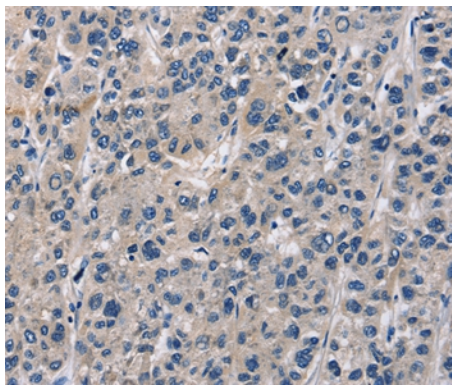
Application Details

Immunohistochemistry: 1:50-1:200

Images



Immunohistochemical analysis of paraffin-embedded Human prostate cancer tissue using #36249 at dilution 1/60.



Immunohistochemical analysis of paraffin-embedded Human liver cancer tissue using #36249 at dilution 1/60.

Background

A target of NESH-SH3/Abi3bp (TARSH) was originally identified as an SH3 domain-binding molecule of the NESH-SH3/Abi3 protein that is involved in Rac-dependent actin polymerization. In recent studies, TARSH gene expression was dramatically induced in mouse embryonic fibroblasts (MEFs) replicative senescence and suppressed in human lung carcinoma specimens and thyroid carcinomas. However, the molecular mechanism underlying the regulation of TARSH in tumorigenesis remains unclear.

Note: This product is for in vitro research use only