

## ATP2C1 Antibody

Catalog No: #36269

Orders: [order@signalwayantibody.com](mailto:order@signalwayantibody.com)Support: [tech@signalwayantibody.com](mailto:tech@signalwayantibody.com)

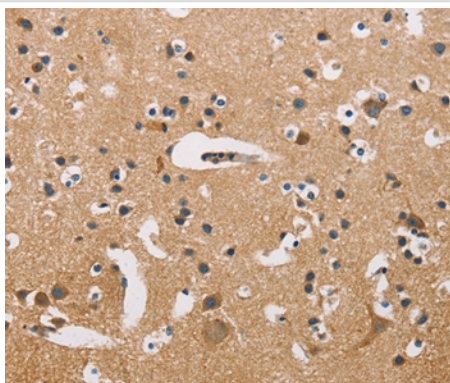
## Description

|                       |   |
|-----------------------|---|
| Product Name          | ATP2C1 Antibody   |
| Host Species          | Rabbit  |
| Clonality             | Polyclonal  |
| Purification          | Antigen affinity purification.  |
| Applications          | IHC   |
| Species Reactivity    | Hu  |
| Specificity           | The antibody detects endogenous levels of total ATP2C1 protein.   |
| Immunogen Type        | Recombinant Protein   |
| Immunogen Description | Fusion protein corresponding to a region derived from internal residues of human ATPase, Ca++ transporting, type 2C, member 1 |
| Target Name           | ATP2C1  |
| Other Names           | HHD; BCPM; PMR1; SPCA1; hSPCA1; ATP2C1A   |
| Accession No.         | Swiss-Prot#: P98194NCBI Gene ID: 27032Gene Accssion: BC028139   |
| Uniprot               | P98194  |
| GeneID                | 27032;  |
| Concentration         | 2.4mg/ml  |
| Formulation           | Rabbit IgG in pH7.4 PBS, 0.05% NaN <sub>3</sub> , 40% Glycerol.   |
| Storage               | Store at -20°C  |

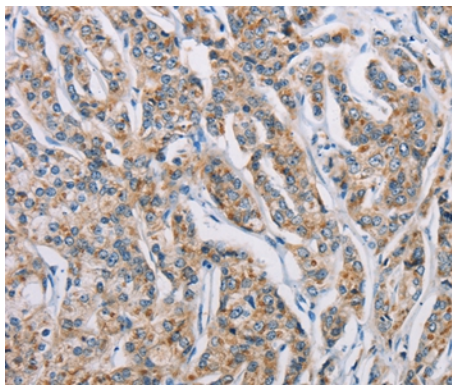
## Application Details

Immunohistochemistry: 1:50-1:200

## Images



Immunohistochemical analysis of paraffin-embedded Human brain tissue using #36269 at dilution 1/50.



Immunohistochemical analysis of paraffin-embedded Human prostate cancer tissue using #36269 at dilution 1/50.

## Background

The protein encoded by this gene belongs to the family of P-type cation transport ATPases. This magnesium-dependent enzyme catalyzes the hydrolysis of ATP coupled with the transport of calcium ions. Defects in this gene cause Hailey-Hailey disease, an autosomal dominant disorder. Alternatively spliced transcript variants encoding different isoforms have been identified.

Note: This product is for in vitro research use only