

EPS8 antibody

Catalog No: #22105



Orders: order@signalwayantibody.com
Support: tech@signalwayantibody.com

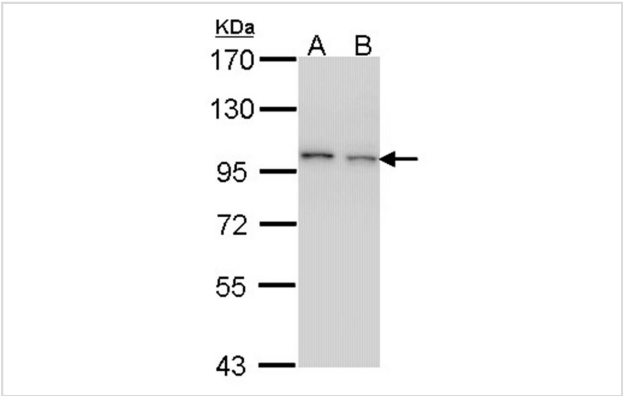
Description

Product Name	EPS8 antibody
Host Species	Rabbit
Clonality	Polyclonal
Purification	Purified by antigen-affinity chromatography.
Applications	WB IHC
Species Reactivity	Hu
Immunogen Type	Peptide
Immunogen Description	Synthetic peptide contain a sequence corresponding to a region within amino acids 761 and 822 of EPS8
Target Name	EPS8
Accession No.	Swiss-Prot:Q12929Gene ID:2059
Uniprot	Q12929
GeneID	2059;
Concentration	1mg/ml
Formulation	Supplied in 1XPBS, 1%BSA, 20% Glycerol (pH7.0). 0.01% Thimerosal was added as a preservative.
Storage	Store at -20°C for long term preservation (recommended). Store at 4°C for short term use.

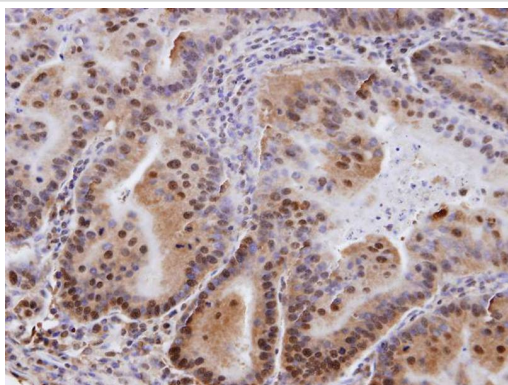
Application Details

Predicted MW: 92kd
Western blotting: 1:500-1:3000
Immunohistochemistry: 1:100-1:250

Images



Sample (30 ug of whole cell lysate)
A: H1299
B: HeLa
7.5% SDS PAGE
EPS8 antibody diluted at 1: 1000



Immunohistochemical analysis of paraffin-embedded gastric CA, using EPS8 antibody at 1: 100 dilution.

Background

This gene encodes a member of the EPS8 family. This protein contains one PH domain and one SH3 domain. It functions as part of the EGFR pathway, though its exact role has not been determined. Highly similar proteins in other organisms are involved in the transduction of signals from Ras to Rac and growth factor-mediated actin remodeling. Alternate transcriptional splice variants of this gene have been observed but have not been thoroughly characterized. [provided by RefSeq]

Note: This product is for in vitro research use only