

CASC3 Antibody

Catalog No: #36311

Orders: order@signalwayantibody.comSupport: tech@signalwayantibody.com

Description

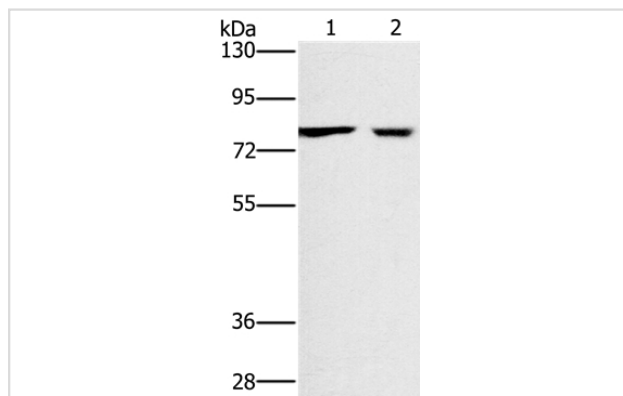
Product Name	CASC3 Antibody
Host Species	Rabbit
Clonality	Polyclonal
Purification	Antigen affinity purification.
Applications	WB IHC
Species Reactivity	Hu
Specificity	The antibody detects endogenous levels of total CASC3 protein.
Immunogen Type	Recombinant Protein
Immunogen Description	Fusion protein corresponding to residues near the C terminal of human ancer susceptibility candidate 3
Target Name	CASC3
Other Names	BTZ; MLN51
Accession No.	Swiss-Prot#: O15234NCBI Gene ID: 22794Gene Accssion: BC050526/O15234
Uniprot	O15234
GeneID	22794;
SDS-PAGE MW	76kd
Concentration	1.1mg/ml
Formulation	Rabbit IgG in pH7.4 PBS, 0.05% NaN ₃ , 40% Glycerol.
Storage	Store at -20°C

Application Details

Western blotting: 1:200-1:1000

Immunohistochemistry: 1:25-1:100

Images



Gel: 6%SDS-PAGE

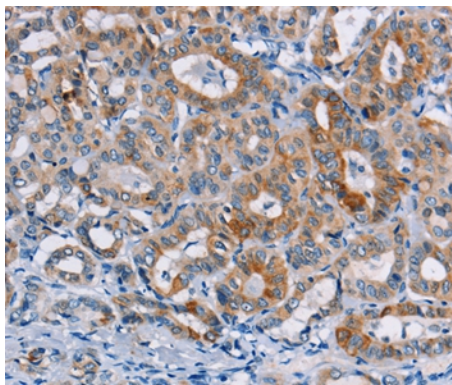
Lysates (from left to right): 293T and A549 cell

Amount of lysate: 40ug per lane

Primary antibody: 1/400 dilution

Secondary antibody dilution: 1/8000

Exposure time: 10 seconds



Immunohistochemical analysis of paraffin-embedded Human brain tissue using #36311 at dilution 1/20.

Background

The product of this gene is a core component of the exon junction complex (EJC), a protein complex that is deposited on spliced mRNAs at exon-exon junctions and functions in nonsense-mediated mRNA decay (NMD). The encoded protein binds RNA and interacts with two other EJC core components. It is predominantly located in the Cytoplasm, but shuttles into the nucleus where it localizes to nuclear speckles.

Note: This product is for in vitro research use only