

CDCA1 antibody

Catalog No: #22108



Orders: [order@signalwayantibody.com](mailto:order@signalwayantibody.com)  
Support: [tech@signalwayantibody.com](mailto:tech@signalwayantibody.com)

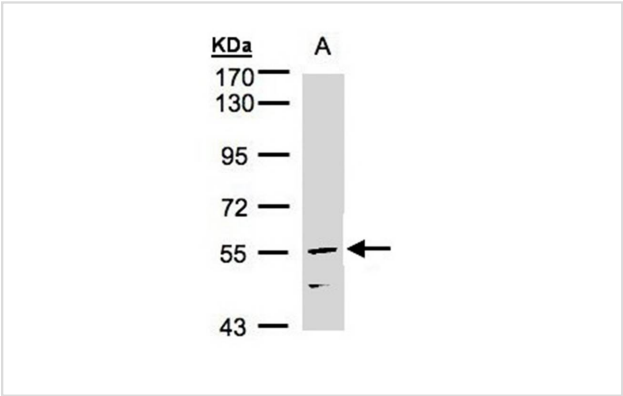
Description

Product Name	CDCA1 antibody
Host Species	Rabbit
Clonality	Polyclonal
Purification	Purified by antigen-affinity chromatography.
Applications	WB IF
Species Reactivity	Hu
Target Name	CDCA1
Accession No.	Swiss-Prot:Q9BZD4Gene ID:83540
Uniprot	Q9BZD4
GeneID	83540;
Concentration	0.4mg/ml
Formulation	Supplied in 0.1M Tris-buffered saline with 10% Glycerol (pH7.0). 0.01% Thimerosal was added as a preservative.
Storage	Store at -20°C for long term preservation (recommended). Store at 4°C for short term use.

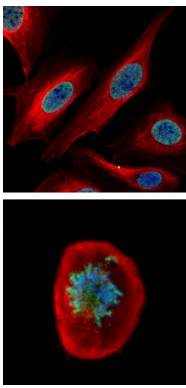
Application Details

Predicted MW:
Western blotting: 1:500-1:3000
Immunofluorescence: 1:100-1:200

Images



Sample (30ug whole cell lysate)  
A: A431  
7.5% SDS PAGE  
Primary antibody diluted at 1: 3000



Confocal immunofluorescence analysis (Olympus FV10i) of paraformaldehyde-fixed U2OS, using CDCA1 antibody (Green) at 1: 500 dilution and alpha-tubulin antibody (Red) at 1: 2000.

## Background

This gene encodes a protein that is highly similar to yeast Nuf2, a component of a conserved protein complex associated with the centromere. Yeast Nuf2 disappears from the centromere during meiotic prophase when centromeres lose their connection to the spindle pole body, and plays a regulatory role in chromosome segregation. The encoded protein is found to be associated with centromeres of mitotic HeLa cells, which suggests that this protein is a functional homolog of yeast Nuf2. Alternatively spliced transcript variants that encode the same protein have been described. [provided by RefSeq]

Note: This product is for in vitro research use only