

CAT Antibody

Catalog No: #36312

Orders: order@signalwayantibody.comSupport: tech@signalwayantibody.com

Description

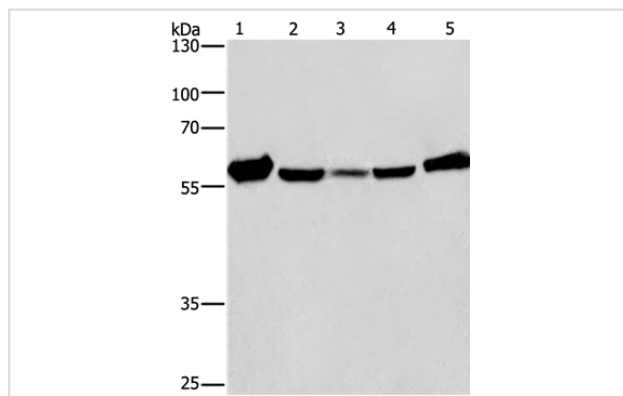
Product Name	CAT Antibody
Host Species	Rabbit
Clonality	Polyclonal
Purification	Antigen affinity purification.
Applications	WB IHC
Species Reactivity	Hu Ms
Specificity	The antibody detects endogenous levels of total CAT protein.
Immunogen Type	Recombinant Protein
Immunogen Description	Fusion protein corresponding to residues near the C terminal of human catalase
Target Name	CAT
Other Names	CATA;Catalase;MGC138422
Accession No.	Swiss-Prot#: P04040NCBI Gene ID: 847Gene Accssion: BC110398
Uniprot	P04040
GeneID	847;
SDS-PAGE MW	60kd
Concentration	1.6mg/ml
Formulation	Rabbit IgG in pH7.4 PBS, 0.05% NaN ₃ , 40% Glycerol.
Storage	Store at -20°C

Application Details

Western blotting: 1:500-1:2000

Immunohistochemistry: 1:50-1:200

Images



Gel: 8%SDS-PAGE

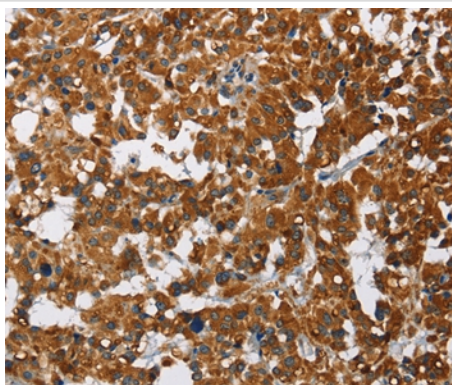
Lysates (from left to right): Mouse liver tissue and Raji cell, hela, hepG2 and A549 cell

Amount of lysate: 40ug per lane

Primary antibody: 1/266.6 dilution

Secondary antibody dilution: 1/8000

Exposure time: 20 seconds



Immunohistochemical analysis of paraffin-embedded Human thyroid cancer tissue using #36312 at dilution 1/40.

Background

This gene encodes catalase, a key antioxidant enzyme in the body's defense against oxidative stress. Catalase is a heme enzyme that is present in the peroxisome of nearly all aerobic cells. Catalase converts the reactive oxygen species hydrogen peroxide to water and oxygen and thereby mitigates the toxic effects of hydrogen peroxide. Oxidative stress is hypothesized to play a role in the development of many chronic or late-onset diseases such as diabetes, asthma, Alzheimer's disease, systemic lupus erythematosus, rheumatoid arthritis, and cancers.

Note: This product is for in vitro research use only