

FBXW7 Antibody

Catalog No: #36334

Orders: order@signalwayantibody.comSupport: tech@signalwayantibody.com

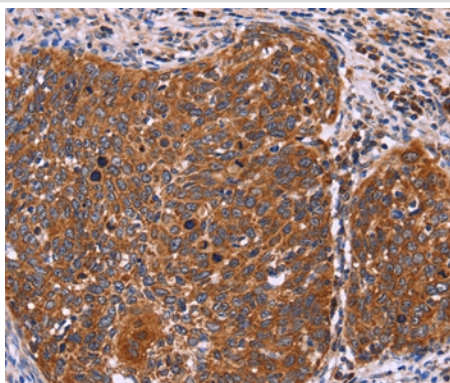
Description

Product Name	FBXW7 Antibody
Host Species	Rabbit
Clonality	Polyclonal
Purification	Antigen affinity purification.
Applications	IHC
Species Reactivity	Hu
Specificity	The antibody detects endogenous levels of total FBXW7 protein.
Immunogen Type	Recombinant Protein
Immunogen Description	Fusion protein corresponding to residues near the C terminal of human F-box and WD repeat domain containing 7, E3 ubiquitin protein ligase
Target Name	FBXW7
Other Names	AGO; CDC4; FBW6; FBW7; hAgo; FBX30; FBXW6; SEL10; hCdc4; FBXO30; SEL-10
Accession No.	Swiss-Prot#: Q969H0NCBI Gene ID: 55294Gene Accssion: BC117244
Uniprot	Q969H0
GeneID	55294;
Concentration	1.9mg/ml
Formulation	Rabbit IgG in pH7.4 PBS, 0.05% NaN ₃ , 40% Glycerol.
Storage	Store at -20°C

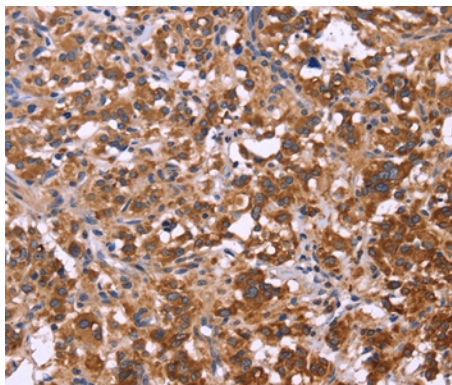
Application Details

Immunohistochemistry: 1:100-1:300

Images



Immunohistochemical analysis of paraffin-embedded Human cervical cancer tissue using #36334 at dilution 1/40.



Immunohistochemical analysis of paraffin-embedded Human thyroid cancer tissue using #36334 at dilution 1/40.

Background

This gene encodes a member of the F-box protein family which is characterized by an approximately 40 amino acid motif, the F-box. The F-box proteins constitute one of the four subunits of ubiquitin protein ligase complex called SCFs (SKP1-cullin-F-box), which function in phosphorylation-dependent ubiquitination. The F-box proteins are divided into 3 classes: Fbws containing WD-40 domains, Fbls containing leucine-rich repeats, and Fbxs containing either different protein-protein interaction modules or no recognizable motifs. The protein encoded by this gene was previously referred to as FBX30, and belongs to the Fbws class; in addition to an F-box, this protein contains 7 tandem WD40 repeats.

Note: This product is for in vitro research use only