

CDR2 Antibody

Catalog No: #36338

Orders: order@signalwayantibody.comSupport: tech@signalwayantibody.com

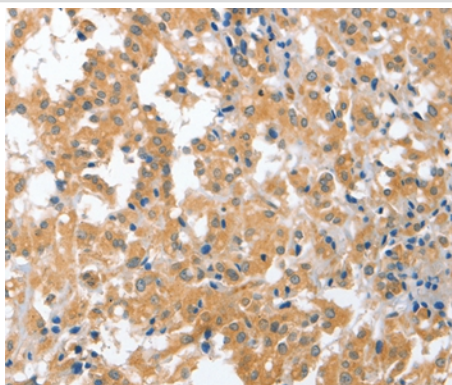
Description

Product Name	CDR2 Antibody
Host Species	Rabbit
Clonality	Polyclonal
Purification	Antigen affinity purification.
Applications	IHC
Species Reactivity	Hu
Specificity	The antibody detects endogenous levels of total CDR2 protein.
Immunogen Type	Recombinant Protein
Immunogen Description	Fusion protein corresponding to residues near the C terminal of human cerebellar degeneration-related protein 2, 62kDa
Target Name	CDR2
Other Names	Yo; CDR62
Accession No.	Swiss-Prot#: Q01850NCBI Gene ID: 1039Gene Accssion: BC017503
Uniprot	Q01850
GeneID	1039;
Concentration	2.5mg/ml
Formulation	Rabbit IgG in pH7.4 PBS, 0.05% NaN ₃ , 40% Glycerol.
Storage	Store at -20°C

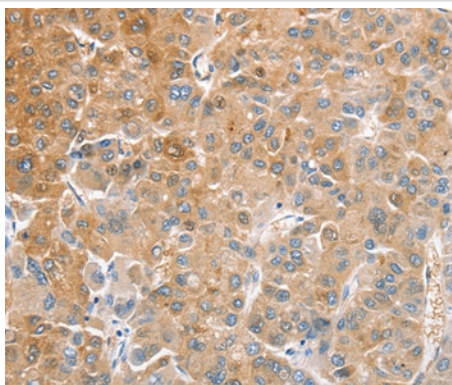
Application Details

Immunohistochemistry: 1:50-1:200

Images



Immunohistochemical analysis of paraffin-embedded Human thyroid cancer tissue using #36338 at dilution 1/60.



Immunohistochemical analysis of paraffin-embedded Human liver cancer tissue using #36338 at dilution 1/60.

Background

CDR2 (cerebellar degeneration-related protein 2), also referred to as Yo or CDR62, is a 545 amino acid protein that is associated with the development of paraneoplastic cerebellar degeneration (PCD). PCD, an immune-mediated syndrome, belongs to a heterogeneous group of rare paraneoplastic neurologic disorders affecting the neurological system. PCD is characterized by subacute cerebellar ataxia and occurs mainly in patients with ovarian, uterine, fallopian tube or breast cancer.?

Note: This product is for in vitro research use only