

CIDEC Antibody

Catalog No: #36353



Orders: order@signalwayantibody.com
Support: tech@signalwayantibody.com

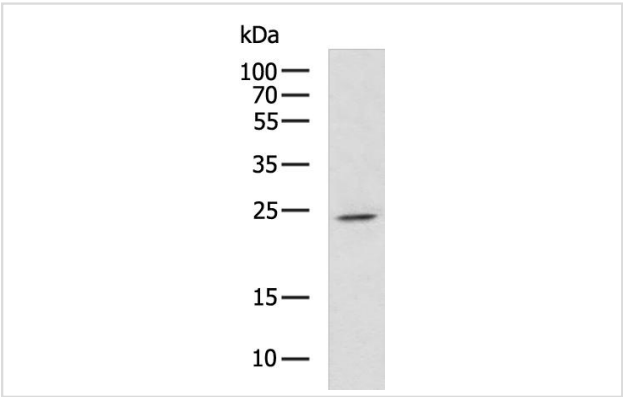
Description

Product Name	CIDEC Antibody
Host Species	Rabbit
Clonality	Polyclonal
Purification	Antigen affinity purification.
Applications	WB,IHC,ELISA
Species Reactivity	Human, Mouse, Rat
Specificity	The antibody detects endogenous levels of total CIDEC protein.
Immunogen Type	Recombinant Protein
Immunogen Description	Full length fusion protein
Target Name	CIDEC
Other Names	CIDE3; FPLD5; FSP27; CIDE-3
Accession No.	Swiss-Prot#: Q96AQ7NCBI Gene ID: 63924Gene Accssion: BC016851
Uniprot	Q96AQ7
GeneID	63924;
SDS-PAGE MW	27kd
Concentration	1mg/ml
Formulation	Rabbit IgG in pH7.4 PBS, 0.05% NaN3, 40% Glycerol.
Storage	Store at -20°C

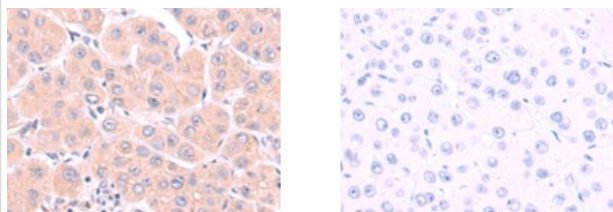
Application Details

Western blotting: 1:500-1:2000
Immunohistochemistry: 1:50-1:200

Images



Gel: 12%SDS-PAGE;
Lysate: 40 ug;
Lane: Mouse liver tissue lysate;
Primary antibody: (CIDEC Antibody) at dilution 1/1000;
Secondary antibody: (HRP-conjugated Goat anti rabbit IgG) at 1/5000 dilution;
Exposure time: 90 seconds



The image on the left is immunohistochemistry of paraffinembedded Human liver cancer tissue using (CIDECA Antibody) at dilution 1/70, on the right is treated with fusion protein.(Original magnification: 200)

Background

This gene encodes a member of the cell death-inducing DNA fragmentation factor-like effector family. Members of this family play important roles in apoptosis. The encoded protein promotes lipid droplet formation in adipocytes and may mediate adipocyte apoptosis. This gene is regulated by insulin and its expression is positively correlated with insulin sensitivity. Mutations in this gene may contribute to insulin resistant diabetes. A pseudogene of this gene is located on the short arm of chromosome 3. Alternatively spliced transcript variants that encode different isoforms have been observed for this gene.

Note: This product is for in vitro research use only